



November 1996

EMBARGOED UNTIL 11.00 AM FRIDAY 1 NOVEMBER 1996

South Australian Economic Indicators

Information ■



ABS PUBLICATIONS, SOUTH AUSTRALIA

Cat. No.	Publication	Latest issue	Date of issue
GENERAL			
1202.4	Information Paper : Guidelines for the Development of Community Surveys <i>irr</i>		14 Nov. 1985
1301.4	South Australian Year Book <i>a</i> (\$30.00)	1996	30 Nov. 1995
1302.4	Pocket Year Book of South Australia <i>a</i> (\$8.50)	1995	1 May 1995
1304.4	Local Government Area Statistics <i>irr</i> (\$20.00)	1993	30 July 1993
1306.4	South Australia at a Glance <i>a</i>	1996	1 May 1996
1307.4	South Australian Economic Indicators <i>m</i> (\$15.50)	Oct. 1996	3 Oct. 1996
1352.4	Sales of Goods and Services by Businesses Involved in Water Related Activity in South Australia <i>irr</i> (\$13.00)	1994-95	7 Dec. 1995
POPULATION AND VITAL STATISTICS			
2840.4	Adelaide, a Social Atlas <i>irr</i> (\$45.00)	Census 1991	31 Mar. 1993
2841.4	Aboriginal People in South Australia <i>irr</i> (\$15.00)	Census 1991	11 Feb. 1994
3201.4	Estimated Resident Population in Statistical Local Areas, Preliminary <i>a</i> (\$10.70)	30 June 1992	15 Apr. 1993
3202.4	Estimated Resident Population in Statistical Local Areas <i>irr</i> (\$10.00)	June 1986 to 1991	28 Oct. 1993
3204.4	Estimated Resident Population by Age and Sex in Statistical Local Areas <i>a</i> (\$14.50)	30 June 1995	25 Mar. 1996
3311.4	Demography <i>a</i> (\$18.00)	1994	8 Mar. 1996
3312.4	Deaths <i>a</i> (\$15.00)	1993	6 Dec. 1994
SOCIAL STATISTICS			
4104.4	Aboriginal Births and Deaths, Review of Data Quality and Statistical Summary <i>irr</i> (\$9.50)	1988	16 Mar. 1990
4175.4	Participation in Sporting and Physical Recreational Activities <i>irr</i> (\$14.50)	Oct. 1995	21 Dec. 1995
4190.4	National Aboriginal and Torres Strait Islander Survey <i>irr</i> (\$17.00)	1994	17 Sept. 1996
4195.4	Aboriginal and Torres Strait Islander People at a Glance <i>irr</i> (\$1.00)	1994	27 Sept. 1996
4402.4	Community and Volunteer Work <i>irr</i> (\$7.50)	Oct. 1988	4 Aug. 1989
4509.4	Crime and Safety <i>irr</i> (\$11.50)	Apr. 1995	31 Aug. 1995
PUBLIC FINANCE			
5502.4	Local Government Finance <i>a</i> (\$10.70)	1991-92	21 May 1993
5503.4	State and Local Authorities Finance <i>a</i> (\$13.30)	1991-92	2 July 1993
LABOUR FORCE			
6201.4	Labour Force <i>q</i> (\$16.50)	May 1994	14 July 1994
6204.4	Womens Work <i>irr</i> (\$3.00)	July 1992	23 July 1992
6215.4	Women's Employment Patterns, Adelaide Statistical Division <i>irr</i> (\$10.00)	Nov. 1992	17 Feb. 1993
RURAL			
7111.4	Principal Agricultural Commodities, Preliminary <i>a</i> (\$13.50)	1995-96	11 Sept. 1996
7113.4	Agriculture <i>a</i> (\$16.50)	1994-95	15 July 1996
MANUFACTURING			
8221.4	Manufacturing Industry <i>a</i> (\$19.50)	1992-93	26 July 1996
INTERNAL TRADE			
8623.4	Retailing in South Australia <i>irr</i> (\$15.00)	1991-92	21 Jan. 1994
8635.4	Tourist Accommodation <i>q</i> (\$15.00)	June qtr 1996	13 Sept. 1996
BUILDING			
8710.4	Housing and Locational Preferences, Adelaide Statistical Division <i>irr</i> (\$10.00)	1991	23 Aug. 1991
8731.4	Building Approvals <i>m</i> (\$13.50)	Aug. 1996	1 Oct. 1996
8741.4	Dwelling Unit Commencements Reported by Approving Authorities <i>m</i> (\$13.00)	July 1996	15 Oct. 1996
8752.4	Building Activity <i>q</i> (\$13.50)	Mar. qtr 1996	17 July 1996
TRANSPORT			
9203.4	Drivers and Passengers : Travel to Work, Adelaide Statistical Division <i>irr</i> (\$10.00)	Oct. 1993	14 Dec. 1993



SOUTH AUSTRALIAN ECONOMIC INDICATORS

November 1996

P.M. GARDNER
Regional Director

AUSTRALIAN BUREAU OF STATISTICS

CATALOGUE NO. 1307.4

© Commonwealth of Australia 1996

Produced by the Australian Government Publishing Service

PREFACE

South Australian Economic Indicators is a monthly publication which contains the latest available data at the time of preparation for a range of statistical series that have been identified as indicators of economic activity in this State. In a number of cases the figures presented are preliminary and subject to revision in subsequent issues.

Written and graphic commentary have been included for many of the selected series and analysis has been augmented with the calculation of the percentage change from the previous reference period together with the presentation of comparative Australian data.

Time series information has been included to provide a historical perspective on many of the selected indicators. Future issues may be expanded to include further historical data in response to expressed user needs. This product is under continuous review and any suggestions for enhancement will be welcomed.

More detailed information on each series, including explanatory and technical notes, can be obtained from other Australian Bureau of Statistics publications or alternative data sources. To assist those seeking further information a source publication for each of the series has been documented in the statistical summary.

If you have any inquiries concerning this publication please contact the editor, John Callinan, telephone (08) 8237 7307. All requests for statistical information should be directed to the ABS Information Service, GPO Box 2272, Adelaide SA 5001, telephone (08) 8237 7100.

P.M. GARDNER
Regional Director

Australian Bureau of Statistics
Adelaide
October 1996



CONTENTS

	Page
Preface	iii
REVIEW	2
Overview	
State accounts	
International accounts	
Consumption and investment	
Production	
Prices	
Labour force and demography	
Incomes	
Financial markets	
Forward outlook	
STATISTICAL SUMMARY	18
State accounts	
International accounts	
Consumption and investment	
Production	
Prices	
Labour force and demography	
Incomes	
Financial markets	
TIME SERIES	
State accounts - current prices	20
State accounts - average 1989-90 prices	21
Merchandise exports by commodity group	22
Merchandise exports by country	22
Merchandise exports by industry of origin	23
Merchandise imports by commodity group	23
Turnover of retail establishments by industry	24
New motor vehicle registrations by type of vehicle	25
Actual private new capital expenditure by selected industry and type of asset	26
Tourist accommodation	27
Building approvals	28
Building commencements	29
Value of building work done during period	29
Production, livestock and selected commodities	30
Consumer price index, by group	32
Average retail prices of selected consumer items	33
Estimated resident population and components of population change	33
Labour force - numbers	34
Labour force - rates	35
Average weekly earnings of employees	36
Finance commitments	37
For more information	38

REVIEW

Overview

- Merchandise exports were valued at \$338.6 million in August 1996, a decrease of 6.0% on July and an increase of 3.3% on August 1995. The value of merchandise imports was \$309.9 million, the highest since July 1992 with \$321.9 million of imports.
- The trend estimate of retail turnover increased by 0.6% in August 1996 compared with a 0.7% increase in each of the previous 3 months.
- The trend estimate for new motor vehicle registrations in August 1996 decreased 2.3%.
- The trend for dwelling unit approvals continued to rise with a 1.7% increase in August 1996 but was 15.4% lower than the August 1995 estimate.
- The value of non-residential building approvals in August 1996 increased 45.2% to \$60.9 million.
- The total value of building work commenced during the June quarter 1996 increased by 33.2% to \$370.9 million.
- In the June quarter 1996 the value of engineering construction work done in South Australia increased by 13.9% to \$225.7 million compared with a 19.9% increase nationally.
- The Consumer Price Index increased 0.2% for the September quarter 1996, the lowest quarterly increase recorded since December quarter 1993.
- The Price Index of Materials used in House Building rose 0.3% in August 1996 while the Index of Materials Used in Non-house building rose 0.2%.
- The trend estimate of employed persons declined 0.1% in September 1996.
- The trend unemployment rate for South Australia has decreased from 9.6% in September 1995 to 9.5% in September 1996.
- The proportion of persons working overtime in August 1996 was 14.3%.
- Working days lost through industrial disputes during July 1996 totalled 2,800.
- The number of short term visitor arrivals in July increased 44.6% and was 21.0% higher than in July 1995.
- The trend estimate for the value of owner-occupied housing commitments in August 1996 fell 2.7% to \$216.6 million and was the lowest month in 3 years.
- In August 1996 new finance commitments of South Australians either as personal, commercial finance or lease finance all declined.

State Accounts

NOTE: Deficiencies in the data sources used to estimate gross operating surplus for recent quarters may at times lead to the current price estimates of gross state product GSP(I) being under or over stated for particular States. Consequently, the measured growth rate for constant price GSP(I) for those States will also be affected.

The constant price series for gross state product (GSP) have been labelled as 'experimental'. Users are cautioned that these estimates are derived indirectly by calculating a deflator from the expenditure components. It is emphasised that, at times, movements that can not be fully explained may be introduced into the constant price GSP(I) series through the use of this proxy deflator.

Trend Estimates (Current Prices)

Gross state product (GSP) grew 0.8% in the June quarter compared with the national average of 1.4%. This is the third consecutive quarter in which the rate of increase in GSP has slowed and is considerably below the strong growth of 2.3% recorded in the September quarter 1995.

Wages, salaries and supplements grew 0.8%, slightly lower than in recent quarters. Growth continues to be below the national rate, a trend evident since the December quarter 1993. Growth through the year to June quarter 1996 was 4.8% compared with the national average of 6.2%.

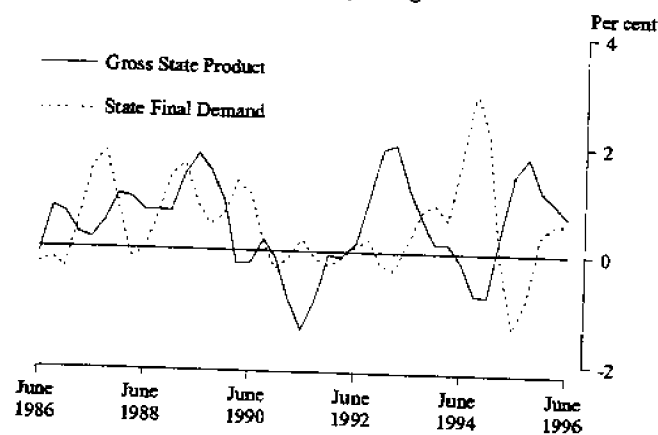
Gross operating surplus grew by 1.0% in the June quarter, continuing a pattern of falling growth rates evident from December quarter 1995. By contrast the national average has remained fairly constant at about 1.8% for the past 3 quarters.

Indirect taxes less subsidies grew by 0.4% in the June quarter, continuing a pattern of falling growth rates evident from the September quarter 1995.

Trend Estimates (Constant Prices)

The experimental GSP at constant prices grew 0.7% in the June quarter and was 4.7% above June quarter 1995. The increase in GSP outstripped that of state final demand for the sixth consecutive quarter although the gap has narrowed significantly over the past 2 quarters.

**GROSS STATE PRODUCT AND
STATE FINAL DEMAND - TREND
(CONSTANT PRICES)
Quarterly Changes**



Growth in state final demand of 0.6% in the June quarter is below the national growth of 0.9% in domestic final demand. Growth in state final demand has been below the national average for 6 consecutive quarters although the gap has narrowed over the past 2 quarters.

Private final consumption expenditure grew 0.4% in the June quarter compared with the national average of 0.8%. Growth in private final consumption expenditure has been fairly constant over the past 3 quarters. Growth through the year to the June quarter 1996 was 2.1%, approximately half the national rate of 4.1%.

Private gross fixed capital expenditure grew 2.8% in the June quarter compared with the national average of 1.8%. Increases in expenditure on equipment and non-dwelling construction more than offset the decline in expenditure on dwellings, which fell for the seventh consecutive quarter.

The decline of 0.1% in public final demand reflects a fall in government final consumption expenditure (which fell for the sixth consecutive quarter) and quite strong growth in public gross fixed capital expenditure.

International Accounts

Exports

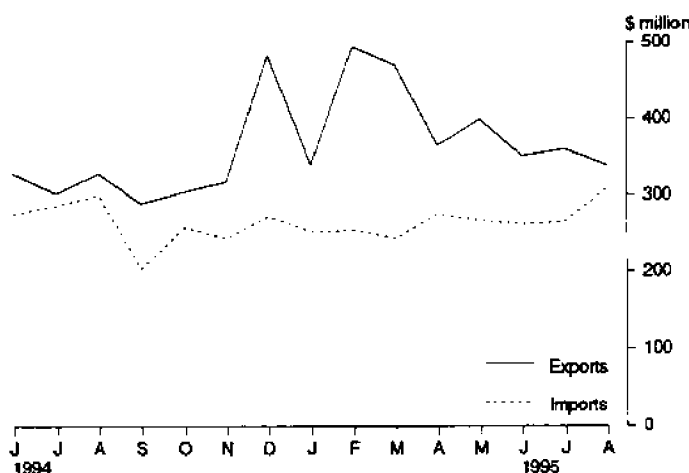
In August 1996 the total value of merchandise exports was \$338.6 million, a decrease of 6.0% on July and an increase of 3.3% on August 1995.

The commodity groups showing the largest decreases when compared with the previous month were road vehicles, parts etc., down \$22.2 million, cereals etc. down \$14.9 million and wool and sheepskins, down \$5.2million. These decreases were partly offset by increases in metals and metal manufactures, up \$15.6 million, and wine, up \$6.5 million.

Japan received 15.0%, the European Community 14.8% and the ASEAN countries 12.3% of total exports in August.

Exports from the agriculture, forestry and fishing industry fell by \$32.8 million or 36.3%, mining exports fell by \$3.5 million or 14.4% and manufacturing rose by \$12.3 million or 5.7%.

MERCHANDISE EXPORTS AND IMPORTS



Imports

The value of merchandise imports for August 1996 was \$309.9 million, the highest since July 1992 with \$321.9 million of imports, a 16.9% increase on the previous month and a 3.5% increase on August 1995. Petroleum and petroleum products accounted for the largest increase of imported merchandise, increasing by \$23.5 million or 74.5% on the previous month.

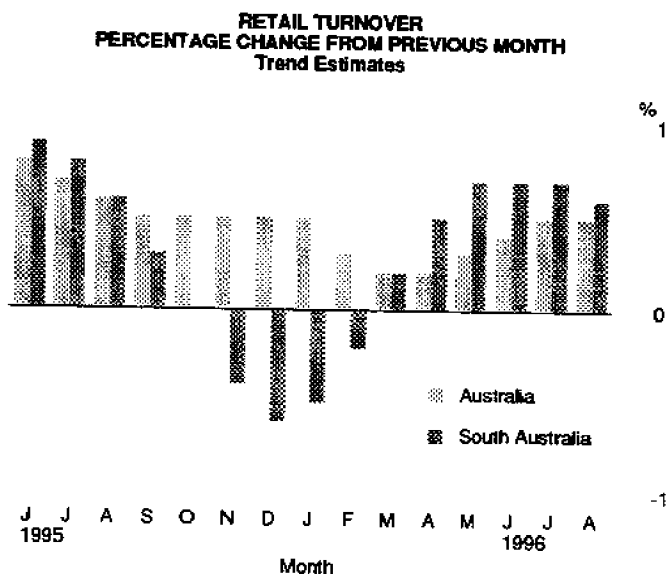
Consumption and Investment

Retail Turnover

The trend estimate of retail turnover in South Australia increased by 0.6% in August 1996 compared with 0.7% in each of the previous 3 months. The trend estimate for Australia increased by 0.5%.

Over the past 3 months the trend estimate grew by \$14.9 million with increases of \$15.9 million in the food retailing, \$3.2 million in hospitality and services, \$2.0 million in department stores, and \$1.1 million in recreational good retailing. This was partly offset by decreases of \$4.9 million in other retailing group, and \$2.2 million in clothing and soft good retailing.

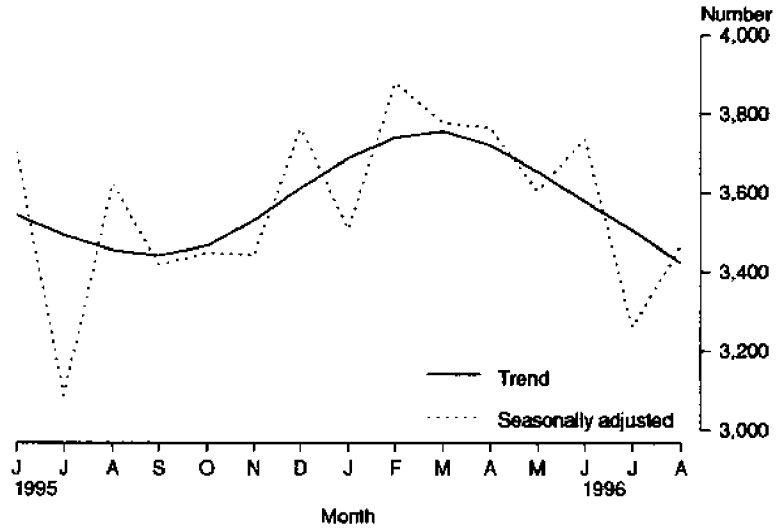
The seasonally adjusted estimate of retail trade in August 1996 increased 1.8%. In original terms, South Australian retail turnover was \$756.5 million, an increase of 1.6% on August 1995.

*New Motor Vehicle Registrations*

The trend estimate for new motor vehicle registrations in August 1996 decreased 2.3%. The seasonally adjusted estimate for August 1996 increased by 6.3% from July 1996 and decreased by 4.3% from August 1995.

In original terms there were 3,565 new motor vehicles registered in August 1996, an increase of 3.1% from July 1996 and a decrease of 10.0% on August 1995. For new passenger vehicles, the leading makes registered were Holden (665 vehicles), Mitsubishi(615), Ford (609), Toyota (358) and Hyundai (229).

NEW MOTOR VEHICLE REGISTRATIONS



Tourist Accommodation

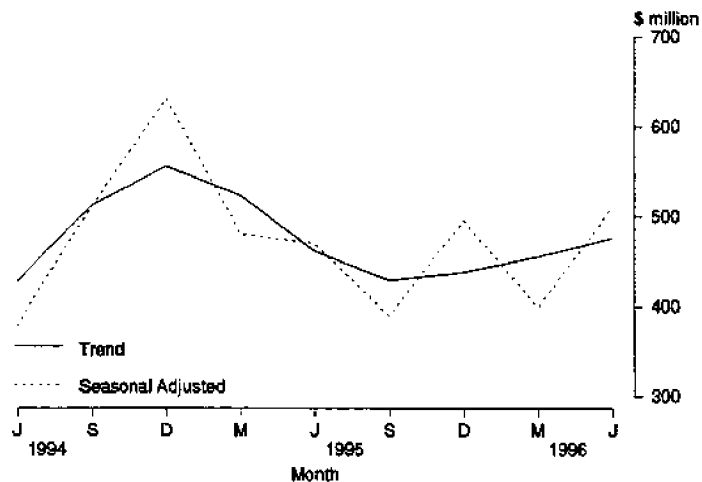
When the June quarter 1996 is compared with the June quarter 1995, the number of holiday flats, units and houses available for short-term letting increased by 7.8%. Unit nights occupied increased by 13.8% while the unit occupancy rate rose from 35.9% to 38.0%. Accommodation takings increased by 20.0% from \$2.5 million to \$2.9 million while average takings per unit night occupied rose from \$56 to \$59.

Private New Capital Expenditure

The trend estimate (in current prices) for private new capital expenditure in South Australia for the June quarter 1996 was \$476 million. The increase of 4.6% from the previous quarter is a continuation of trend growth which commenced in December quarter 1995. The Australian figure rose by 6.6%. The South Australian total for the quarter now represents 4.7% of the Australian figure.

Private new capital expenditure in original terms for the June quarter 1996 was \$513 million, an increase of 36.8% from the March quarter 1996. Buildings and structures accounted for \$108 million, and equipment, plant and machinery \$405 million. Expenditure for the 12 months to June 1996 fell by 15.3% from 12 months to June 1995 with the Australian figure rising by 10.2%.

PRIVATE NEW CAPITAL EXPENDITURE



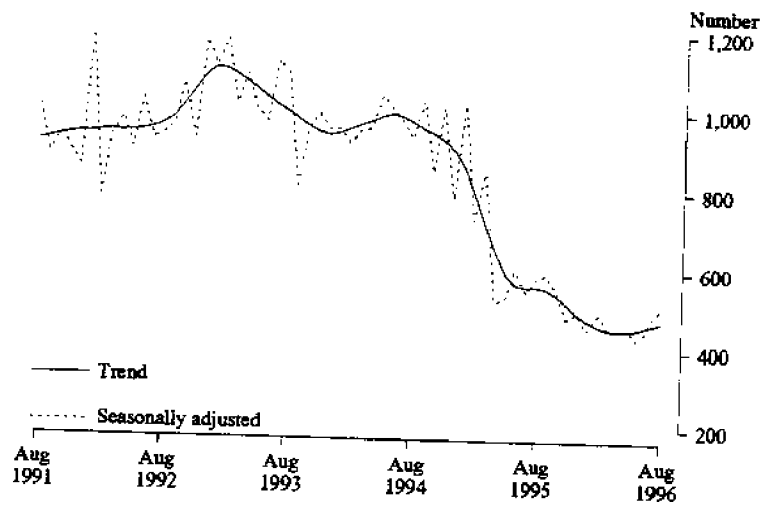
Production

Dwelling Approvals

The trend for dwelling unit approvals continued to rise with a 1.7% increase in August 1996 but was 15.4% lower than the August 1995 estimate. In original terms, the number of dwelling unit approvals was 547, an increase of 3.6% from July 1996.

The national trend estimate for the total number of dwelling units approved in August 1996 (10,515) was 0.4% higher than the estimate for July and 2.9% below August 1995. In original terms, South Australia accounted for 4.9% of the total dwelling units approved in Australia during August 1996.

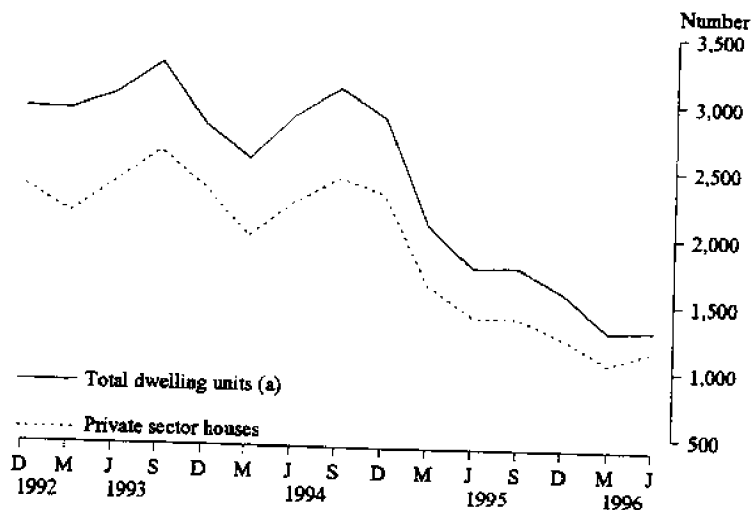
DWELLING UNITS APPROVED



Dwelling Commencements

From the Building Activity Survey, it was estimated that 1,309 dwelling units were commenced in South Australia during the June Quarter 1996. The latest figure represented a rise of 14 dwellings units (1.1% increase) from the previous quarter compared with a 7.6% rise nationally. The latest figure for South Australia was 25.3% below the total for the June quarter 1995 while the national decrease over the 12 month period was 16.0%.

DWELLING UNITS COMMENCED



(a) Includes Conversions, etc

Value of Non-residential Building Approvals

In August 1996, the value of non-residential building projects approved in South Australia continued its rise to \$60.9 million. This was 45.2% higher than the July 1996 total and almost double that of the August 1995 total.

Expressed in average 1989-90 prices, the value of non-residential building approvals in South Australia for the June quarter 1996 was \$178.2 million, a 50.8% increase from the March quarter.

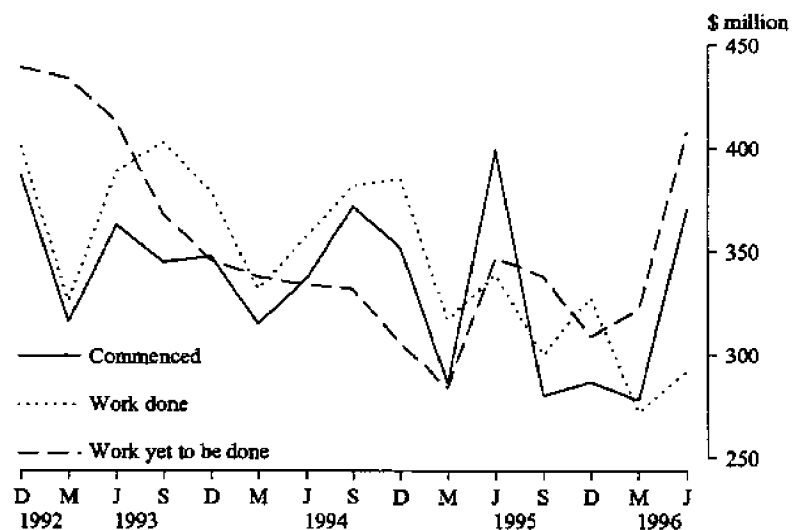
Value of Total Building Activity

The total value of building work commenced in South Australia during the June quarter 1996 increased by 33.2% to \$370.9 million. This increase was generally confined to the non-residential building sector (64.8% increase) in particular the shops, other business premises and entertainment and recreational categories. South Australia had a 7.0% decrease in building commencements from the June quarter 1995 while the total for Australia showed a 4.0% decrease. The South Australian share of total building commencements was 5.8% for the June quarter 1996.

The total value of building work done during the June quarter 1996 increased by 7.5% to \$292.2 million compared with an increase of 9.2% nationally. Compared with the June quarter 1995, South Australia had a 13.8% decrease in the value of total building work done while the national movement was an 8.0% decrease.

The total value of building work yet to be done in South Australia was \$407.8 million at the end of June 1996, a rise of 26.8% from the previous quarter while the corresponding national figure remained steady. Expressed as a proportion of the national total, the total value of building work yet to be done in South Australia was 4.4% for the June quarter up from the previous quarter of 3.5%.

VALUE OF BUILDING ACTIVITY



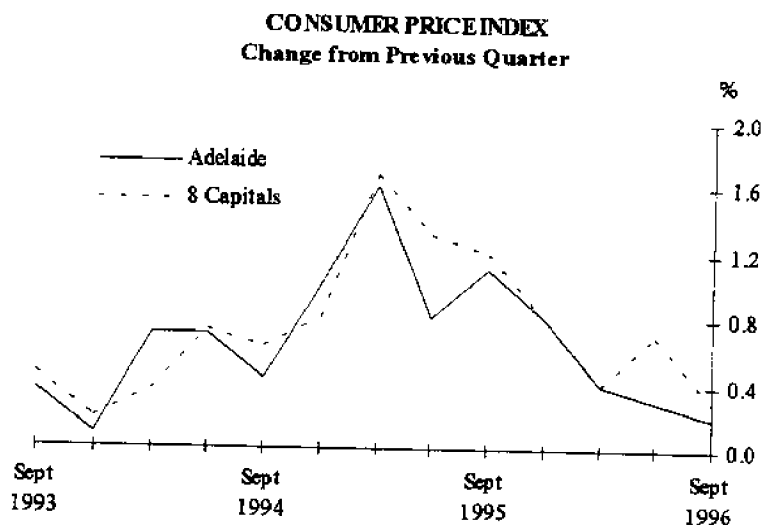
Value of Engineering Construction

In the June quarter 1996 the value of engineering construction work done in South Australia increased by 13.9% to \$225.7 million compared with a 19.9% increase nationally. South Australia had a 5.5% share of the national total of \$4,114.7 million. The value of work commenced during the quarter fell by 36.1% to \$196.1 million for South Australia while the corresponding national figure fell by 31.4% to \$3,072.4 million. The State's proportion of national commencements was 6.8% for the June quarter 1996.

Prices

Consumer Price Index

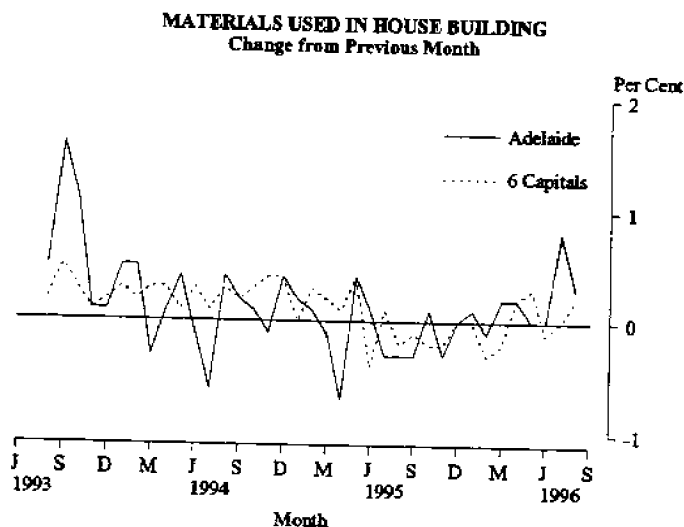
For the September quarter 1996 the Consumer Price Index (all groups) increased 0.2% for Adelaide compared with an increase of 0.3% for the 8 capital cities. These are the lowest quarterly increases recorded since December quarter 1993. The annual increase was 1.7% for Adelaide and 2.1% for the 8 capital cities.



House Building Materials

The Price Index of Materials used in House Building rose 0.3% for Adelaide, in the month of August, due to the increase in reinforcing steel and hardwood prices. The weighted average for the 6 State capitals rose by 0.2% for the same period.

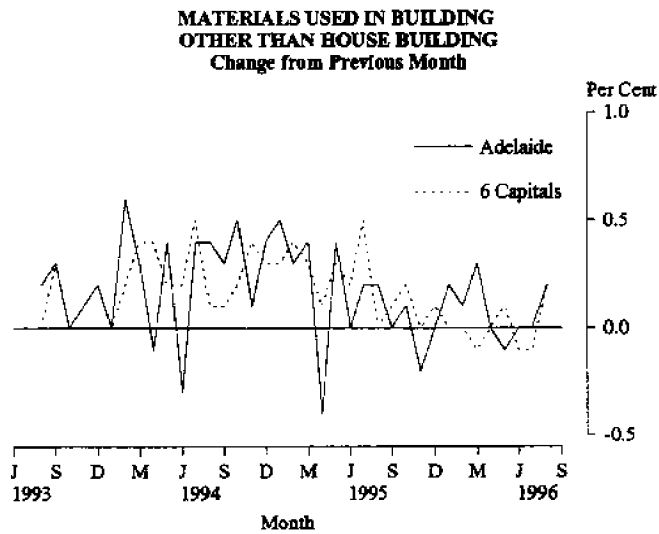
For the 12 months to August 1996, the Index rose 1.0% for Adelaide, compared with a fall of 0.4% for the weighted average of the 6 State capitals.



Non-house Building Materials

Adelaide recorded an increase of 0.2% in the Price Index of Materials used in Building other than House Building for the month of August, due to an increase in reinforcing steel bar and mesh prices. The Index rose by 0.2% for the weighted average of the 6 State capitals.

The Index shows a rise of 0.5% in Adelaide for the 12 months to August 1996, compared with a rise of 0.4% for the weighted average of the 6 State capitals.



House Prices

The Price Index of Established Houses in Adelaide increased 0.2% whilst the Project Home Index decreased by 0.9% during the June quarter 1996. The weighted average of the 8 capital cities index, over the same period showed a 1.2% and 0.1% increase respectively.

Between June quarter of 1995 and 1996 the Price Index for Established Houses in Adelaide decreased by 3.0% and project homes by 2.2%. Nationally, for the 12 month period, established house prices recorded a 1.1% increase and project homes rose by 0.8%.

Passenger Transport Costs

The passenger transport cost index measures changes in the costs of operating a public transport passenger bus service in Adelaide. Costs covered include labour costs, leasing charges, registration and insurance, repairs and maintenance, fuel and overheads. The index has been compiled on a quarterly basis from September 1995 with a base of 100.0 in 1993-94. The June quarter 1996 index was 104.2, down from 105.6 in March 1996, down from 104.9 in December 1995 and up from the September 1995 index of 102.6.

Labour Force and Demography

Population

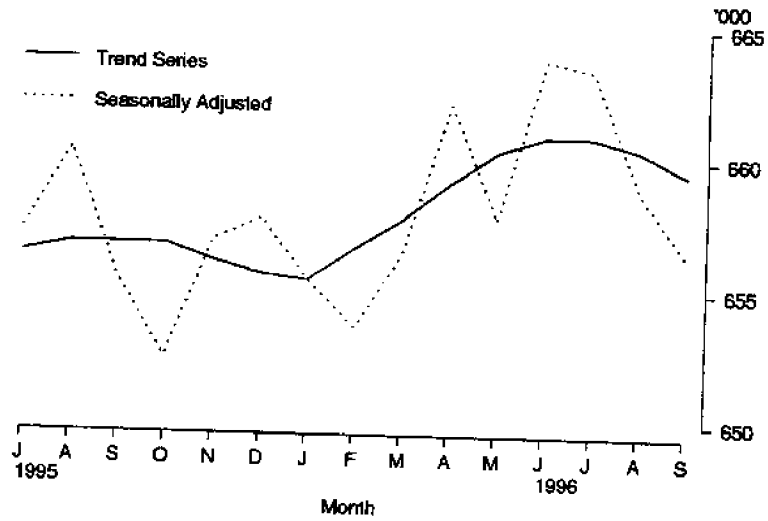
At 31 March 1996 the estimated resident population of South Australia was 1,477,700. This was an increase of 0.1% (2,210) persons from the December quarter. The continuing low growth rate for South Australia is attributable to a net outflow in interstate migration of 1,476 persons which was partly offset by a net inflow of overseas migration of 1,370 persons. In the March quarter there was a natural increase of 2,316 persons.

Employment

The trend estimate of employed persons in South Australia has decreased in recent months, thus reversing the continuous growth evident between January 1995 and June 1996. The September 1996 estimate (659,500), however, is still 0.4% higher than the level of 12 months ago.

In September 1996, the trend estimate of employed persons in Australia was 8,365,600. This was 1.1% higher than the level for September 1995. Over the past year, full-time and part-time employment have increased by 0.7% and 2.3% respectively.

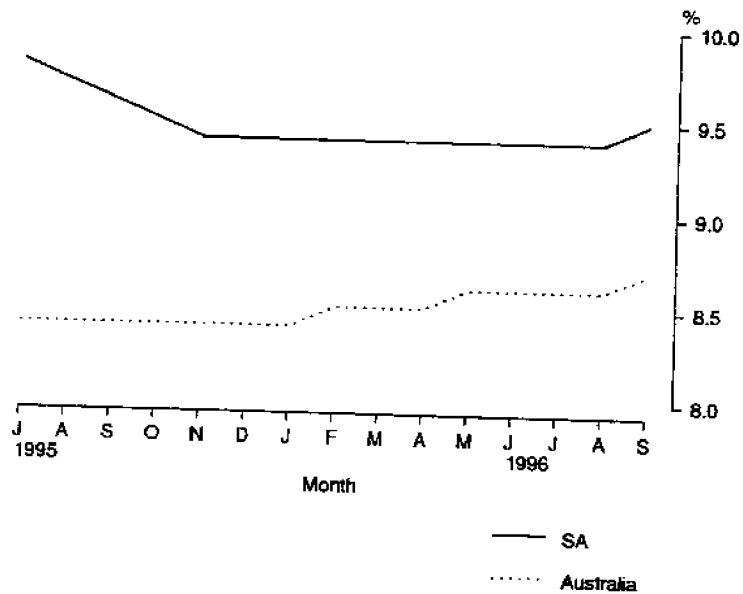
EMPLOYED PERSONS



Unemployment

The trend unemployment rate for South Australia has decreased from 9.6% in September 1995 to 9.5% in September 1996. Over the same period, the trend unemployment rate for males has decreased from 10.6% to 10.1%, while the rate for females has increased from 8.3% to 8.8%.

UNEMPLOYMENT RATES
Trend



After remaining at 8.6% in the 4 months to August, the trend unemployment rate for Australia has risen to 8.7% in September 1996.

Overtime

The proportion of employees who worked overtime in South Australia in August 1996 was 14.3%. This was lower than the August 1995 level of 15.9%.

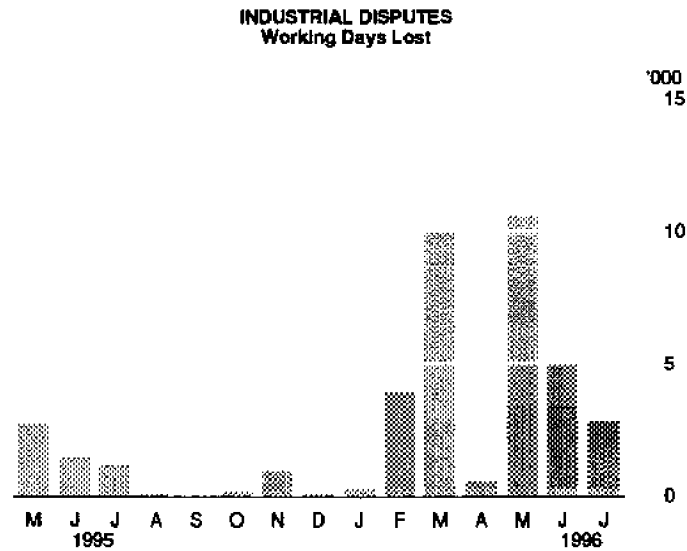
Nationally, the proportion of employees working overtime in August 1996 was 14.9% compared with 16.2% a year earlier.

Employees working overtime in South Australia recorded an average of 6.7 overtime hours per week in August 1996. This was lower than the corresponding national level of 6.8 hours.

Industrial Disputes

There were 2,800 working days lost through industrial disputes during July 1996. At just 2.0% of the national total (137,300 working days lost), South Australia experienced a relatively low level of disputation.

In the 12 months to July 1996, 34,600 working days had been lost due to industrial disputes in South Australia.



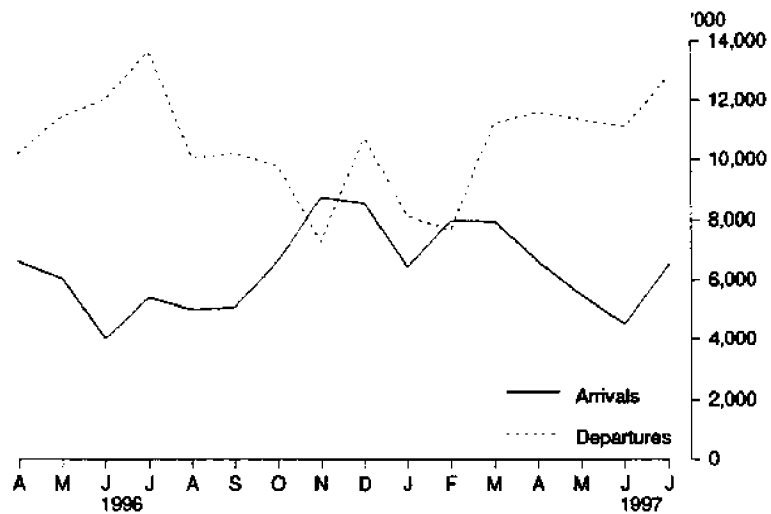
Short term Overseas Visitor Arrivals

The number of short term visitors arriving in South Australia rose by 44.6% to 6,541 between June and July 1996. This figure was 21.0% higher than the number of arrivals in July 1995, but was only 1.8% of the total number of arrivals for the whole of Australia.

Short term Resident Departures

In July 1996, 12,818 residents of South Australia left to go overseas for a period of less than 12 months, an increase of 15.5% from June 1996. This compares with a decrease of 9.8% for the month in the total number of Australian residents going overseas. However, 6.1% fewer South Australians left in July 1996 than in July 1995.

SHORT TERM OVERSEAS ARRIVALS AND DEPARTURES



Incomes

Average Weekly Earnings

The trend estimate of average weekly ordinary time earnings of full-time adult employees in South Australia increased from \$625.40 in February 1996 to \$634.00 in May 1996. Male full-time ordinary time earnings rose from \$658.90 in February 1996 to \$671.70 in May 1996. Over the same period, the increase for females was less pronounced, from \$554.90 to \$555.20.

Between February 1996 and May 1996, the trend estimate of average weekly total earnings of all employees in South Australia increased from \$522.40 to \$531.50.

Since it is an average of earnings across all employees, changes in average weekly earnings may occur through changes in employment as well as changes in pay levels.

Award Rates of Pay

Over the 12 months to August 1996, the weekly award rates of pay index for full-time employees in South Australia increased by 1.5%. This compares with an annual increase in the index of 1.2% for Australia.

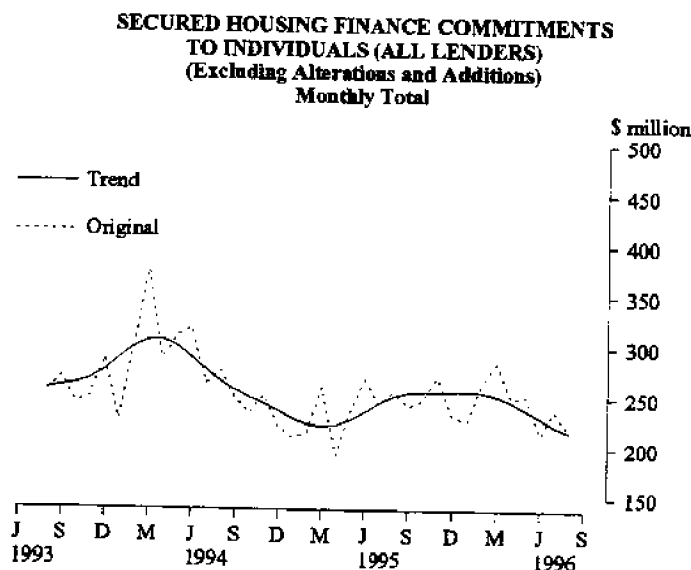
For full-time adult male employees in South Australia, the largest annual movement of the index occurred in the electricity, gas and water supply industry division, with an increase of 3.6%.

For full-time adult female employees, the largest annual movement of the index occurred in the public administration and defence industry division, with an increase of 2.1%.

Financial Markets

Housing Finance

The decline evident since January in the trend estimate for the value of owner-occupied housing commitments continued in August, falling 2.7% to \$216.6 million (13.8% below August 1995) and the lowest month in 3 years. In contrast the national trend increased 2.0% for the month (8.1% above the previous August).



Total housing finance commitments (original figures including alterations and additions) decreased by 8.9% in August to \$236.5 million, 13.8% below the previous August. The most significant contributors to this decrease were commitments for the purchase of established dwellings (the largest category) down 13.9% to \$130.8 and construction of dwellings down 6.0% to \$21.6 million (36.8% below the previous August). Commitments for construction of dwellings in August have declined to 4.2% of the national total. Alterations and additions also decreased, down 13.0% to \$18.9 million.

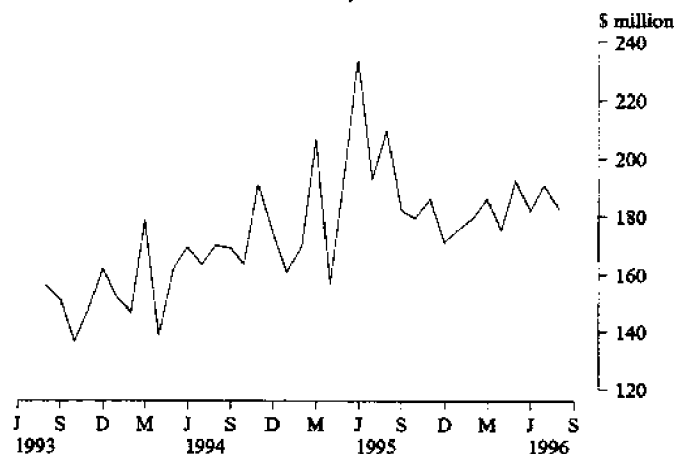
Commitments for refinancing increased 3.7% to \$59.5 million, 26.7% above the previous August. Refinancing now represents 25.2% of the total new lending commitments for the State, a similar proportion to the national total.

Personal Finance

Total commitments for August decreased 4.2% to \$182.8 million, 12.7% lower than August 1995. The national decreases were 13.5% and 0.3% respectively. South Australian commitments represented 6.6% of the national total.

Fixed loan commitments decreased 10.5% due mainly to a 38.4% fall in refinancing to a level 47.0% below the previous August and the lowest month since April 1994. The falls were partly offset by the increase in commitments for used motor cars and station wagons, the largest category, which rose 6.9% to \$39.1 million during the month while commitments for new motor cars and station wagons decreased 9.5% to \$11.4 million.

PERSONAL FINANCE COMMITMENTS
(ALL LENDERS)
Monthly Total



Revolving credit facilities increased 6.8% to \$74.6 million during the month, 3.4% above August 1995.

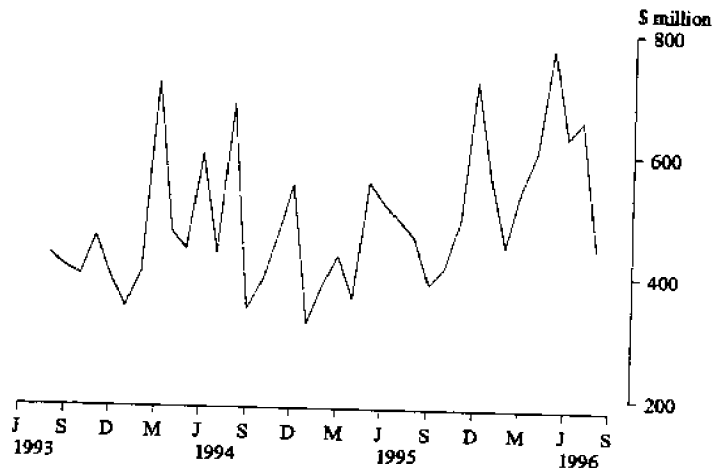
Commercial Finance

For the first time in 11 months, total commercial finance commitments has fallen below the corresponding month of the previous year. Total commitments decreased 32.3% to \$444.6 million in August 1996, down 3.7% on August 1995. Nationally the decrease was 24.0% during the month but 2.2% higher than the previous August.

The main decrease occurred with revolving credit facilities which declined 54.4% to \$151.1 million, from the high figure for July. Nationally the decline was 27.8% with South Australia representing 2.8% of the Australian figure. The largest falls were recorded for agriculture, forestry, fishing and hunting down \$98.9 million (86.5%) and manufacturing down \$80.1 million (77.7%).

Commitments under fixed loan facilities decreased 9.7% to \$293.5 million during August (5.3% of the Australian total), and 5.3% below August 1995. The main decreases were for community services, down \$7.0 million (30.9%) after two high months, and agriculture, forestry, fishing and hunting, down \$6.3 million (14.4%). The latter category has fallen over for the past 3 months to previous levels. Also manufacturing, finance, investment and insurance, recreation, personal and other services all had big decreases after recording high figures for July.

COMMERCIAL FINANCE COMMITMENTS
Monthly Total



Lease Finance

In August 1996 the value of goods under new finance lease commitments decreased 17.2% to \$18.9 million continuing the fall from the June 1996 peak. South Australia's proportion of the national total decreased to 3.0%.

New motor cars and station wagons not subject to depreciation, the largest category, decreased 20.0% to \$4.7 million over the month, down 10.0% on the previous August. Those subject to depreciation however increased 8.6% compared with July to be 13.8% above August 1995.

Most categories had substantial decreases for the month except commitments for new and used heavy trucks and construction and earth moving equipment.

Forward Outlook

Composite Leading Indicator

The Composite Leading Indicator (CLI) is a single time series produced by aggregating eight individual economic indicators, and has been developed by the ABS as an experimental series to supplement existing forms of economic analysis and modelling.

The CLI summarises the early signals contained in a selection of economic indicators and is designed to assist the detection of turning points between successive expansions and slow downs of economic activity as measured by constant price GDP(A). It does not attempt to forecast the level of economic activity.

In the June quarter 1996 :

- the experimental CLI rose 0.27%, following a 0.26% rise in the March quarter 1996.
- The CLI is now showing a trough at the September quarter 1995 followed by strong growth..

The quarterly data are released in more detail in the *Australian Economic Indicators* (1350.0). The CLI was the topic of the Focus article in the September 1993 edition of *South Australian Economic Indicators* (1307.4).

Australian Business Expectations

Surveys of business expectations have been available to decision makers for a number of years from several sources. These surveys provided *qualitative* indicators in the form of the net proportion of businesses expecting a rise or fall in future business conditions. Since the December quarter 1993, the ABS has been compiling a *quantitative* indicator of business expectations in the form of an expected weighted aggregate change in a range of economic variables. These data are available on a quarterly basis in *Australian Business Expectations* (5250.0).

AUSTRALIAN BUSINESS EXPECTATIONS SOUTH AUSTRALIA AND AUSTRALIA SALES OF GOODS AND SERVICES EXPECTED PERCENTAGE AGGREGATE CHANGE

Reference Period	Short term		Medium term	
	Expected aggregate change between		Expected aggregate change between	
	June 1996 and Sep. 1996	Sep. 1996 and Dec. 1996	June 1996 and June 1997	Sep. 1996 and Sep. 1997
	%	%	%	%
South Australia	0.3	2.1	2.3	3.3
Australia	1.6	1.6	3.6	3.1

Short term

Businesses in South Australia expect a rise of 2.1% in sales of goods and services in the December quarter 1996 compared with the September quarter while the national expectation was a 1.6% increase.

Medium term

Businesses in South Australia expect sales of goods and services in the September quarter 1997 to be 3.3% above September quarter 1996. Australia wide the expectation was for 3.1% growth.

PC AUSSTATS

Online access to the latest statistical information from the ABS

The most accessible statistics in Australia . . .

With PC AUSSTATS, getting access to ABS information has never been easier.

Online, all the time . . .

You'll never be without vital information again. PC AUSSTATS will let you access the information you need, when you need it — 24 hours a day, 7 days a week.

You can connect to the ABS database and find the information you want, simply and quickly. And once you've selected the information, downloading to your PC is done for you by the PC AUSSTATS software.

Ready to go . . .

Once downloaded, the data is in .wks format — compatible with all the most common spreadsheet packages available today — so it's ready for instant analysis and manipulation on your own PC.

And with thousands of series covering the most important economic and social data, it's like having your own private ABS library — with librarian.

With the latest information . . .

By using PC AUSSTATS, you will know that you have the latest information available.

The main PC AUSSTATS database is updated daily, giving you full access to the latest facts and figures about the nation.

Plus, you don't have to worry about revisions or corrections to the data — the PC AUSSTATS database is updated in line with any revisions to our printed publications.

. . . and a historical perspective

The database that you access with PC AUSSTATS gives you time series data.

So you get not only the latest information, but also a historical perspective — and this gives you the base you need to perform your own trend analysis.

Historical information is typically available for a 15 year period for all series on PC AUSSTATS — and this includes monthly, quarterly, half yearly and yearly series.

Arrange a demonstration today . . .

For a demonstration of this powerful new information resource, call Graham Duncan on (08) 237 7609.

STATISTICAL SUMMARY

Indicator	SOUTH AUSTRALIA					AUSTRALIA				SA as a % of Source index
	Period	No.	% change from		No.	% change from		Previous period	previous year	
			Same period Previous period	Same period previous year		Same period Previous period	Same period previous year			
State Accounts										
Gross domestic product (I)										
Current prices	\$m	June qtr 96	8,710	3.7	5.8	122,332	3.2	6.5	7.1	1
1989-90 prices trend	\$m	June qtr 96	7,507	0.7	4.7	109,367	0.7	4.2	7.0	1
Wages, salaries and supplements										
Current prices trend	\$m	June qtr 96	4,391	0.8	4.8	61,122	1.2	6.2	7.2	1
Private final consumption expenditure										
Current prices	\$m	June qtr 96	5,722	3.1	3.8	76,344	3.6	6.2	7.5	1
1989-90 prices trend	\$m	June qtr 96	4,946	0.4	2.1	66,217	0.8	4.3	7.5	1
Private gross fixed capital expenditure										
1989-90 prices trend	\$m	June qtr 96	945	2.8	-1.2	18,661	1.8	3.0	5.1	1
International Accounts										
Exports (excluding re-exports)	\$m	Aug 96	338.6	-6.0	3.3	6,074.6	-1.5	4.2	5.6	2
Imports	\$m	Aug 96	309.9	16.9	3.5	6,753.9	-1.2	-1.2	4.6	2
Consumption and Investment										
Retail Turnover										
Current prices original	\$m	Aug 96	756.5	1.3	1.6	10,113.1	0.7	5.3	7.5	3
Current prices trend	\$m	Aug 96	784.3	0.6	1.9	10,364.9	0.5	5.2	7.6	3
1989-90 prices original	\$m	Jun qtr 96	1,877.1	3.6	0.3	24,877.4	1.4	2.8	7.5	3
New motor vehicle registrations										
Original	No.	Aug 96	3,565	3.1	-10.0	54,334	-1.2	0.4	6.6	4
Trend	No.	Aug 96	3,424	-2.3	-0.9	54,393	-0.6	4.4	6.3	4
Takings, licensed hotels, motels and guest houses with facilities										
	\$m	Jun qtr 96	39.1	-6.7	9.3	835.8	-4.3	10.5	4.7	5
Private new capital expenditure										
Current prices original	\$m	Jun qtr 96	513	36.8	3.8	11,129	33.4	18.5	4.6	6
Current prices trend	\$m	Jun qtr 96	476	4.6	8.7	10,228	6.6	15.3	4.7	6
Private new capital expenditure										
	\$m	1995-96	1,783	..	-15.3	37,829	..	10.2	4.7	6
Expected private new capital expenditure	\$m	1996-97	1,491	..	-20.2	39,478	..	3.1	3.8	6
Production										
Dwelling unit approvals										
Original	No.	Aug 96	547	3.6	-18.5	11,229	-4.4	-3.6	4.9	7
Trend	No.	Aug 96	474	1.7	-15.4	10,515	0.4	-2.9	4.5	7
New dwelling units commenced										
	No.	Jun qtr 96	1,309	1.1	-25.3	30,996	7.6	-16.0	4.2	8a
Value of non-residential building approvals										
	\$m	Aug 96	60.9	45.2	93.2	1,133.1	29.7	1.5	5.4	7
Value of total building activity										
Commenced	\$m	Jun qtr 96	370.9	33.2	-7.0	6,413.7	-2.3	-4.0	5.8	8
Work done	\$m	Jun qtr 96	292.2	7.5	-13.8	6,522.4	9.2	-8.0	4.5	8
Work yet to be done	\$m	Jun qtr 96	407.8	26.8	17.6	9,177.1	0.6	-4.0	4.4	8
Value of engineering construction work done										
	\$m	Jun qtr 96	225.7	13.9	11.5	4,114.7	19.9	10.4	5.5	9
Manufacturing production										
Electricity (SA and NT)	mill. kWh	Aug 96	780	-3.1	-1.5	14,610	-4.8	-0.3	5.3	10
Cheese	tonnes	Jun 96	1,963	-9.7	-10.0	11,755	-27.1	2.1	16.7	10
Red meat	tonnes	Aug 96	13,961	6.8	-10.0	204,456	0.4	-10.6	6.8	11
Mineral exploration expenditure (other than for petroleum)										
	\$m	Jun 96 qtr	6.8	33.3	3.0	284.9	30.1	16.5	2.4	12

Indicator	Period	SOUTH AUSTRALIA			AUSTRALIA			SA as a % of Australia	Source index	
		No.	% change from		No.	% change from				
			Previous period	Same period previous year		Previous period	Same period previous year			
Prices										
CPI - All groups	1989-90=100	Sep. qtr 96	122.2	0.2	1.7	120.1	0.3	2.1	..	13
Price index of materials used in house building	1989-90=100	Aug. 96	119.6	0.3	1.0	115.7	0.2	-0.4	..	14
Price index of materials used in building other than houses	1989-90=100	Aug. 96	113.1	0.2	0.5	112.8	0.2	0.4	..	15
Price index of established houses	1989-90=100	Jun. qtr 96	107.9	0.2	-3.0	113.6	1.2	1.1	..	16
Price index of project homes	1989-90=100	Jun. qtr 96	112.1	-0.9	-2.2	109.6	0.1	0.8	..	16
Labour Force and Demography										
Population (resident at end qtr)	'000	Mar qtr 96	1,477.7	0.1	0.2	18,238.6	0.4	1.4	8.1	17
Labour force										
Original	'000	Sep. 96	729.6	0.8	0.1	9,229.8	1.5	1.4	7.9	18
Trend	'000	Sep. 96	729.0	0.0	0.4	9,157.9	0.2	1.3	8.0	18
Employed persons										
Original	'000	Sep. 96	659.1	0.5	0.2	8,429.6	1.3	1.1	7.8	18
Trend	'000	Sep. 96	659.5	-0.1	0.4	8,365.6	0.1	1.1	7.9	18
Participation rate										
Original (a)	%	Sep. 96	61.9	0.7	-0.5	64.1	0.9	-0.1	..	18
Trend (a)	%	Sep. 96	61.9	0.0	-0.2	63.6	0.0	-0.2	..	18
Unemployment rate										
Original (a)	%	Sep. 96	9.7	3.2	0.0	8.7	0.2	0.3	..	18
Trend (a)	%	Sep. 96	9.5	1.1	-1.0	8.7	0.1	0.3	..	18
Job vacancies	'000	Aug 96	5.0	108.3	100.0	63.5	18.5	2.4	7.9	19
Average weekly overtime per employee	hours	Aug 96	1.0	-9.4	-7.7	1.0	-11.4	-7.3	..	19
Industrial disputes	'000 working days lost	Jul 96	2.8	-44.0	133.3	137.3	2.9	276.2	2.0	20
Short-term overseas visitors arrivals	No.	Jul 96	6,541	44.6	21.0	358,233	16.7	8.6	1.8	21
Short-term resident departures	No.	Jul 96	12,818	15.5	-6.1	236,128	-9.8	1.1	5.4	21
Incomes										
Average weekly earnings (full-time adults; ordinary time)										
Original	\$	May 96	633.80	1.2	3.6	672.60	1.0	3.9	..	22
Trend	\$	May 96	634.00	1.4	3.2	670.70	0.8	3.8	..	22
Award rates of pay index (full-time adults, weekly)	Jun.1985=100	Aug. 96	149.2	0.1	1.5	146.5	0.1	1.2	..	23
Financial markets										
Secured housing finance	\$m	Aug. 96	236.5	-8.9	-13.8	4,390.2	-3.2	8.4	5.4	24
Finance commitments										
Personal	\$m	Aug. 96	182.8	-4.2	-12.7	2,790.5	-13.5	-0.3	6.6	25
Commercial	\$m	Aug. 96	444.6	-32.3	-3.7	10,930.7	-24.0	2.2	4.1	25
Lease	\$m	Aug. 96	18.9	-17.2	-5.9	630.9	-15.4	15.2	3.0	25
Interest rates										
Banks new housing loans (a)	%	Sep. 96	9.25	0.0	-1.3	..	26
Banks business loans (a)										
small, medium sized business	%	Sep. 96	10.75	0.0	-0.4	..	26
large business	%	Sep. 96	10.25	-0.2	-0.4	..	26

(a) Change is shown in terms of percentage points.

TIME SERIES

STATE ACCOUNTS AT CURRENT PRICES South Australia

Period	Final consumption expenditure		Gross fixed capital expenditure		State final demand	Gross State product (I)	Wages, salaries and supplements
	Private	Public	Private	Public			
ANNUAL (\$ million)							
1985-86	11,581	3,860	3,162	1,266	19,869	19,301	9,946
1986-87	12,470	4,203	3,255	1,287	21,215	20,609	10,602
1987-88	13,748	4,392	3,964	1,196	23,300	22,828	11,230
1988-89	15,248	4,649	4,151	1,429	25,477	25,526	12,546
1989-90	16,474	5,003	4,488	1,577	27,542	27,969	13,954
1990-91	18,122	5,477	4,234	1,529	29,362	28,429	14,746
1991-92	18,958	5,812	4,021	1,429	30,220	28,719	14,718
1992-93	19,487	5,983	3,972	1,354	30,796	30,149	15,283
1993-94	20,437	6,887	3,957	1,185	32,266	31,951	16,258
1994-95	21,742	6,780	4,878	1,222	34,622	33,030	16,461
1995-96	23,058	6,598	4,003	1,212	34,871	35,192	17,309
PERCENTAGE CHANGE FROM PREVIOUS YEAR							
1986-87	7.7	8.9	2.9	1.7	6.8	6.8	6.6
1987-88	10.2	4.5	21.8	-7.1	9.8	10.8	5.9
1988-89	10.9	5.9	4.7	19.5	9.3	11.8	11.7
1989-90	8.0	7.6	8.1	10.4	8.1	9.6	11.2
1990-91	10.0	9.5	-5.7	-3.0	6.6	1.6	5.7
1991-92	4.6	6.1	-5.0	-6.5	2.9	1.0	-0.2
1992-93	2.8	2.9	-1.2	-5.2	1.9	5.0	3.8
1993-94	4.9	11.8	-0.4	-12.5	4.8	6.0	6.4
1994-95	6.4	1.4	23.3	3.1	7.3	3.4	1.2
1995-96	6.1	-2.7	-17.9	-0.8	0.7	6.5	5.2
QUARTERLY, ORIGINAL (\$ million)							
1993 - 94 -							
December	5,378	1,627	1,008	302	8,315	8,431	4,094
March	4,964	1,505	932	257	7,658	7,785	3,919
June	5,072	1,926	1,042	368	8,408	7,992	4,194
1994 - 95 -							
September	5,295	1,655	1,161	244	8,355	8,096	4,115
December	5,659	1,700	1,567	292	9,218	8,720	4,073
March	5,277	1,559	1,045	320	8,201	7,984	4,050
June	5,511	1,866	1,105	366	8,848	8,230	4,223
1995 - 96 -							
September	5,693	1,653	895	224	8,465	8,211	4,199
December	6,095	1,635	1,133	263	9,126	9,875	4,455
March	5,548	1,515	895	292	8,250	8,396	4,232
June	5,722	1,795	1,080	433	9,030	8,710	4,423
QUARTERLY, TREND (\$ million)							
1993 - 94 -							
December	5,092	1,631	969	303	7,955	7,918	4,017
March	5,145	1,678	970	292	8,085	8,031	4,075
June	5,201	1,695	1,078	282	8,256	8,136	4,102
1994 - 95 -							
September	5,272	1,714	1,226	314	8,505	8,189	4,087
December	5,371	1,712	1,295	317	8,692	8,198	4,077
March	5,490	1,695	1,211	294	8,713	8,256	4,116
June	5,611	1,681	1,063	278	8,649	8,399	4,189
1995 - 96 -							
September	5,703	1,674	983	276	8,636	8,596	4,260
December	5,748	1,667	994	290	8,699	8,750	4,309
March	5,780	1,650	1,007	318	8,755	8,860	4,357
June	5,812	1,627	1,023	336	8,798	8,932	4,391
PERCENTAGE CHANGE FROM PREVIOUS QUARTER, TREND							
1993 - 94 -							
March	1.0	2.9	0.1	-3.6	1.6	1.4	1.4
June	1.1	1.0	11.1	-3.4	2.1	1.3	0.7
1994 - 95 -							
September	1.4	1.1	13.7	11.3	3.0	0.7	-0.4
December	1.9	-0.1	5.6	1.0	2.2	0.1	-0.2
March	2.2	-1.0	-6.5	-7.3	0.2	0.7	1.0
June	2.2	-0.8	-12.2	-6.1	-0.7	1.7	1.8
1995 - 96 -							
September	1.6	-0.4	-7.5	0.0	-0.2	2.3	1.7
December	0.8	-0.4	1.1	5.1	0.7	1.8	1.2
March	0.6	-1.0	1.3	9.7	0.6	1.3	1.1
June	0.6	-1.4	1.6	5.7	0.5	0.8	0.8

STATE ACCOUNTS AT AVERAGE 1989-90 PRICES
South Australia

Period	Final consumption expenditure		Gross fixed capital expenditure		State final demand	Gross State product (f)
	Private	Public	Private	Public		
ANNUAL (\$ million)						
1985-86	14,991	4,687				
1986-87	14,958	4,850	3,858	1,514	25,050	24,974
1987-88	15,451	4,877	3,821	1,442	24,871	25,260
1988-89	16,084	4,879	4,247	1,304	25,879	25,959
1989-90	16,474	5,003	4,279	1,500	26,742	26,720
1990-91	17,169	5,210	4,488	1,577	27,542	27,969
1991-92	17,447	5,328	4,093	1,480	27,592	27,697
1992-93	17,486	5,376	3,849	1,364	27,988	27,023
1993-94	18,036	5,711	3,686	1,277	27,825	28,077
1994-95	18,904	5,837	3,601	1,120	28,468	29,004
1995-96	19,861	5,599	4,446	1,150	30,337	28,747
			3,644	1,133	30,057	30,108
PERCENTAGE CHANGE FROM PREVIOUS YEAR						
1986-87	-0.2	3.5	-6.1	-4.8	-0.7	1.1
1987-88	3.3	0.6	17.3	-9.6	4.1	2.8
1988-89	4.1	0.0	0.8	15.0	3.3	2.9
1989-90	2.4	2.5	4.9	5.1	3.0	4.7
1990-91	4.2	4.1	-8.8	-6.2	0.2	-1.0
1991-92	1.6	2.3	-6.0	-7.8	1.4	-2.4
1992-93	0.2	0.9	-4.2	-6.4	-0.6	3.9
1993-94	3.1	6.2	-2.3	-12.3	2.3	3.3
1994-95	4.8	2.2	23.5	2.7	6.6	-0.9
1995-96	5.1	-4.1	-18.0	-1.5	-0.9	4.7
QUARTERLY, ORIGINAL (\$ million)						
1993 - 94 -						
December	4,749	1,385	920	284	7,338	7,872
March	4,378	1,323	844	246	6,791	7,007
June	4,456	1,605	938	348	7,347	7,054
1994 - 95 -						
September	4,637	1,423	1,055	232	7,347	7,071
December	4,937	1,447	1,460	278	8,122	7,710
March	4,568	1,370	936	298	7,172	6,865
June	4,762	1,597	995	342	7,696	7,101
1995 - 96 -						
September	4,878	1,403	813	211	7,305	7,072
December	5,206	1,395	1,004	247	7,852	8,484
March	4,721	1,291	821	273	7,106	7,152
June	4,876	1,510	1,006	402	7,794	7,400
QUARTERLY, TREND (\$ million)						
1993 - 94 -						
December	4,488	1,411	885	287	7,086	7,243
March	4,518	1,447	880	278	7,129	7,256
June	4,561	1,458	976	268	7,259	7,242
1994 - 95 -						
September	4,620	1,447	1,121	277	7,478	7,187
December	4,684	1,480	1,186	297	7,640	7,131
March	4,762	1,483	1,101	297	7,629	7,160
June	4,843	1,436	956	275	7,525	7,265
1995 - 96 -						
September	4,897	1,429	880	259	7,466	7,395
December	4,914	1,416	896	271	7,492	7,483
March	4,928	1,398	919	297	7,535	7,554
June	4,946	1,357	945	311	7,577	7,607
PERCENTAGE CHANGE FROM PREVIOUS QUARTER, TREND						
1993 - 94 -						
March	0.7	2.6	-0.6	-3.1	0.6	0.2
June	1.0	0.8	10.9	-3.6	1.8	-0.2
1994 - 95 -						
September	1.3	-0.8	14.9	3.4	3.0	-0.8
December	1.4	2.3	5.8	7.2	2.2	-0.8
March	1.7	0.2	-7.2	0.0	-0.1	0.4
June	1.7	-3.2	-13.2	-7.4	-1.4	1.5
1995 - 96 -						
September	1.1	-0.5	-7.9	-5.8	-0.8	1.8
December	0.3	-0.9	1.8	4.6	0.3	1.2
March	0.3	-1.3	2.6	9.8	0.6	0.9
June	0.4	-2.9	2.8	4.7	0.6	0.7

MERCHANDISE EXPORTS BY SELECTED COMMODITY GROUP
Final stage of production in South Australia
(\$'000)

Period	Meat and meat preparations	Cereals and cereal preparations	Wine	Wool and sheepskins	Machinery	Metals and metal manufactures	Fish and crustaceans	Road vehicles, parts and accessories	Petroleum and petroleum products	Total
1988-89	181,058	475,481	71,474	415,098	104,163	239,656	95,720	124,815	189,679	2,451,372
1989-90	244,374	724,369	73,484	285,650	111,944	371,136	111,760	161,704	188,105	2,828,091
1990-91	234,299	587,199	123,567	257,576	152,940	433,341	122,604	117,218	291,507	3,007,137
1991-92	270,237	565,582	165,914	351,096	176,536	489,030	147,532	137,091	341,477	3,431,139
1992-93	282,181	573,375	192,255	318,989	211,426	490,594	154,608	338,359	372,445	3,760,602
1993-94	324,796	436,517	238,366	290,963	223,760	462,355	186,861	351,229	276,473	3,889,783
1994-95	307,785	261,052	250,527	301,645	285,323	571,094	191,386	332,321	285,310	3,829,327
1995-96	244,281	712,966	318,188	239,746	339,436	610,720	196,565	249,236	220,915	4,501,898
MONTHLY										
1994 - 95 - June	22,987	36,945	22,354	20,141	32,091	35,726	13,305	30,464	38,853	327,719
1995 - 96 - July	14,901	31,637	25,475	21,658	29,777	30,070	20,641	23,893	14,477	302,270
August	13,129	13,343	25,116	9,231	32,614	56,823	14,318	24,548	23,707	327,668
September	19,591	15,547	36,583	17,746	22,874	53,244	11,704	21,018	17,940	289,169
October	23,556	24,906	28,030	26,785	24,443	52,246	19,427	21,398	14,316	304,371
November	26,104	30,267	16,987	21,284	24,023	43,553	18,840	24,723	19,084	316,947
December	29,693	88,006	26,647	27,775	29,845	72,202	17,240	26,274	17,869	482,760
January	19,108	91,819	15,990	19,531	19,053	48,457	19,458	6,120	7,998	399,414
February	23,461	97,073	24,498	16,038	28,461	51,283	17,828	16,490	31,446	494,804
March	24,273	123,123	29,601	19,495	38,094	58,075	19,701	24,974	5,211	469,876
April	19,866	65,951	28,160	20,765	29,836	35,488	11,760	21,088	37,852	364,491
May	17,209	98,946	25,673	18,360	29,972	55,972	14,242	20,508	18,602	399,205
June	13,389	32,349	35,428	21,076	30,444	53,307	11,403	18,201	12,412	350,922
1996 - 97 - July	11,176	58,119	28,716	16,765	28,330	37,603	10,159	44,328	23,195	360,018
August	8,705	43,210	34,868	11,581	31,764	53,210	10,062	22,132	19,491	338,569

MERCHANDISE EXPORTS BY SELECTED COUNTRIES
Final stage of production in South Australia
(\$'000)

Period	European Community				New Zealand	East Asia				Total East Asia
	United States	Middle East	United Kingdom	Total European Community		Japan	China	Hong Kong	ASEAN	
ANNUAL										
1988-89	184,903	397,324	108,635	355,669	230,263	390,207	51,975	55,474	240,507	869,226
1989-90	229,169	551,953	121,319	412,855	289,970	359,643	86,303	49,273	277,659	929,209
1990-91	321,032	325,450	186,353	480,714	179,193	438,970	146,434	80,640	403,754	1,284,576
1991-92	300,139	381,761	220,048	550,258	214,522	647,674	148,308	108,583	437,670	1,627,108
1992-93	352,764	314,049	237,520	594,701	288,421	649,684	208,135	171,803	487,174	1,820,065
1993-94	393,611	280,499	263,092	571,047	311,999	625,481	220,211	165,163	533,977	1,898,975
1994-95	329,878	184,342	246,118	553,051	376,279	682,936	177,875	193,014	551,433	2,004,012
1995-96	278,913	525,207	287,683	691,886	376,556	679,681	293,319	201,904	571,845	2,063,324
MONTHLY										
1994 - 95 - June	25,381	25,247	17,095	40,679	28,106	66,479	13,411	18,932	52,264	179,796
1995 - 96 - July	31,451	28,883	20,329	40,044	32,696	50,953	18,583	17,047	35,778	143,135
August	22,662	4,945	30,566	62,804	33,608	63,308	9,536	13,467	59,411	166,487
September	23,085	8,565	25,361	62,544	38,618	44,063	10,067	8,898	31,239	123,733
October	19,529	14,689	22,775	56,352	29,954	53,894	22,611	12,689	52,782	160,841
November	16,581	39,009	11,481	29,406	35,627	55,812	15,051	16,409	57,338	172,468
December	27,918	110,671	22,009	66,830	35,281	49,304	17,528	20,841	77,169	187,783
January	19,706	84,056	12,778	44,743	19,029	72,074	29,107	16,119	32,921	187,412
February	23,556	107,885	31,325	78,447	27,767	57,812	37,040	19,718	61,310	202,869
March	24,868	51,582	25,976	65,053	36,571	58,325	58,657	21,622	34,763	203,371
April	21,848	38,851	22,900	43,785	26,357	53,273	36,243	18,290	50,276	187,629
May	20,098	8,796	22,925	60,080	33,384	69,731	28,586	21,158	38,372	185,946
June	27,610	27,274	39,258	81,798	27,664	51,132	10,310	15,646	40,486	141,671
1996 - 97 - July	25,757	19,714	23,437	40,020	58,039	37,555	13,342	14,037	59,925	150,225
August	22,278	29,933	23,926	49,964	37,012	50,620	17,025	20,482	41,739	156,905

MERCHANDISE EXPORTS BY INDUSTRY OF ORIGIN
Final stage of production in South Australia
 (\$'000)

Period	Agriculture, forestry and fishing	Mining	Manufacturing						Total
			Food, beverages and tobacco	Petroleum, coal, chemical associated product	Metal product	Machinery and equipment	Other manu- facturing	Other industries/ confidential	
ANNUAL									
1988-89	891,978	107,269	515,739	176,037	260,978	270,215	96,203	132,953	2,451,372
1989-90	979,463	133,318	583,544	133,078	406,144	320,349	99,984	172,210	2,828,091
1990-91	804,154	120,930	599,030	264,813	474,541	336,500	155,351	251,818	3,007,137
1991-92	882,011	248,846	702,148	201,681	541,522	381,737	178,485	294,709	3,431,139
1992-93	883,725	294,586	766,518	195,387	509,303	641,930	178,726	290,427	3,760,602
1993-94	733,014	245,247	884,737	180,147	475,060	665,066	208,573	497,938	3,889,783
1994-95	592,129	268,537	886,354	186,661	584,838	711,542	243,314	355,952	3,829,327
1995-96	1,014,790	233,099	976,465	172,262	639,095	673,312	226,315	566,559	4,501,898
MONTHLY									
1994 - 95 - June	56,847	29,420	76,114	18,461	36,432	71,002	23,019	16,424	327,719
1995 - 96 - July	65,478	7,842	76,785	17,639	30,986	60,392	18,171	24,978	302,270
August	28,192	32,057	72,851	10,061	57,339	63,519	19,856	43,793	327,668
September	34,304	11,819	86,704	16,508	54,378	50,068	18,498	16,890	289,169
October	52,612	10,747	85,726	12,266	53,132	53,346	16,776	19,767	304,371
November	57,292	27,650	67,517	9,630	44,699	53,265	20,745	36,148	316,947
December	118,496	8,265	98,243	20,005	79,849	63,869	21,986	72,047	482,760
January	119,118	34,731	77,337	8,181	49,325	35,778	17,538	57,407	399,414
February	122,490	24,558	84,791	16,652	53,893	50,806	16,447	125,167	494,804
March	156,080	12,291	89,910	14,432	59,128	70,490	21,525	46,019	469,876
April	94,304	28,555	74,701	16,616	38,555	57,023	18,305	36,433	364,491
May	104,879	23,538	84,190	18,660	59,080	59,098	17,911	31,850	399,205
June	61,544	11,046	77,711	11,611	58,732	55,660	18,558	56,061	350,922
1996 - 97 - July	90,183	24,420	64,078	17,206	37,640	80,279	17,822	28,410	360,018
August	57,410	20,896	78,705	15,367	54,413	62,116	18,701	30,960	338,569

MERCHANDISE IMPORTS BY SELECTED COMMODITY GROUP
Goods released form Customs control in South Australia
 (\$'000)

Period	Food, beverages and tobacco	Petroleum and petroleum products	Metals and metal manu- factures				Machinery	Road vehicles, parts and accessories	Other manu- factured goods	Total
			Chemicals	Textiles						
ANNUAL										
1988-89	60,395	169,397	144,766	47,592	135,225	411,092	415,120	344,344	1,861,622	
1989-90	71,796	203,664	167,154	49,249	147,969	462,885	414,800	399,437	2,050,024	
1990-91	78,926	425,262	140,894	49,087	135,772	515,226	372,603	366,304	2,193,851	
1991-92	82,095	362,777	153,574	62,884	151,165	523,848	435,121	513,012	2,396,954	
1992-93	91,756	570,334	186,001	57,434	255,924	609,212	661,714	521,723	3,068,122	
1993-94	99,177	404,626	200,225	60,172	160,937	595,238	663,617	484,590	2,803,446	
1994-95	115,930	330,430	220,536	64,524	214,432	695,038	749,658	563,368	3,099,510	
1995-96	118,237	346,397	254,111	76,857	213,487	675,821	546,426	728,096	3,114,261	
MONTHLY										
1994 - 95 - June	8,327	24,353	24,351	5,639	28,341	63,713	57,414	50,150	275,460	
1995 - 96 - July	9,188	51,035	22,738	7,385	16,289	58,132	53,294	47,464	286,607	
August	9,606	23,010	28,671	7,480	24,255	67,838	57,785	67,301	299,381	
September	10,407	21,085	12,320	7,156	18,140	45,362	39,826	42,134	203,934	
October	10,865	21,481	14,044	6,525	18,154	50,105	62,159	61,470	257,264	
November	11,322	22,223	18,176	8,716	18,048	61,466	37,229	56,644	243,083	
December	11,964	44,318	14,105	4,193	11,216	43,339	48,448	78,622	272,071	
January	10,464	23,714	22,404	5,206	16,968	71,580	40,787	52,901	252,230	
February	8,386	43,261	20,499	5,920	18,823	49,981	35,606	61,576	254,005	
March	8,874	64	35,531	5,560	19,237	54,103	42,833	49,765	242,811	
April	9,155	42,010	30,055	6,004	16,164	53,368	47,497	60,585	275,217	
May	10,336	32,580	19,676	5,993	17,306	67,743	35,950	63,905	266,218	
June	7,669	21,616	15,891	6,718	18,888	52,804	45,012	85,729	261,458	
1996 - 97 - July	10,309	31,507	13,789	7,478	17,070	66,901	42,448	62,913	265,173	
August	14,251	54,974	16,561	6,946	24,324	70,949	56,353	49,888	309,862	

TURNOVER OF RETAIL ESTABLISHMENTS BY INDUSTRY
South Australia

Period	Food retailing	Department stores	Clothing and soft good retailing	Household good retailing	Recreational good retailing	Other retailing	Hospitality and services	Total
ANNUAL (\$ million)								
1986-87	2,240.3	893.8	396.8	601.0	229.7	332.3	862.0	5,555.9
1987-88	2,378.5	951.2	416.7	660.8	237.5	367.0	941.6	5,953.3
1988-89	2,534.9	971.8	462.2	726.6	268.5	420.7	1,019.1	6,403.8
1989-90	2,679.8	1,041.1	521.1	782.5	291.6	467.1	1,046.7	6,829.9
1990-91	2,978.2	1,069.0	543.9	778.8	303.9	497.7	1,111.2	7,282.7
1991-92	3,163.1	1,087.4	466.5	792.0	278.7	515.7	1,157.3	7,460.7
1992-93	3,018.5	1,101.5	434.2	783.3	311.2	617.4	1,132.7	7,398.8
1993-94	3,152.3	1,107.8	466.1	849.2	354.9	639.6	1,260.5	7,830.4
1994-95	3,360.7	1,128.7	524.0	881.1	359.0	737.8	1,562.3	8,553.6
1995-96	3,676.0	1,138.6	535.0	944.6	407.0	845.1	1,676.3	9,222.6
MONTHLY, ORIGINAL (\$ million)								
1994 - 95 -								
June	282.3	86.8	43.4	80.1	28.3	64.4	132.0	717.3
1995 - 96 -								
July	282.2	92.0	41.9	80.2	29.4	65.0	138.9	729.6
August	297.8	86.9	42.7	78.6	30.2	69.9	138.7	744.8
September	301.0	84.0	40.8	72.4	31.0	72.9	145.4	747.5
October	305.4	92.0	45.4	81.4	32.3	70.1	147.4	774.0
November	322.2	105.0	48.0	80.7	36.1	72.0	150.7	814.7
December	360.9	174.5	67.9	100.3	51.4	92.4	177.0	1,024.4
January	289.6	80.2	44.7	77.9	34.4	66.2	131.5	724.5
February	288.2	73.2	37.7	71.1	32.7	65.8	122.7	691.4
March	306.7	80.8	40.0	79.1	34.1	68.4	128.2	737.3
April	300.2	90.6	42.5	73.5	32.6	64.4	134.6	738.4
May	321.5	91.9	42.4	76.1	32.1	72.4	131.7	768.1
June	300.3	87.5	41.0	73.3	30.7	65.6	129.5	727.9
1996 - 97 -								
July	316.7	90.6	40.6	78.8	33.9	60.7	125.4	746.7
August	329.4	86.8	34.8	79.6	33.7	63.5	128.7	756.5
MONTHLY, TREND (\$ million)								
1994 - 95								
June	292.9	96.0	44.1	79.8	31.3	68.1	146.5	758.6
1995 - 96 -								
July	297.0	95.7	43.8	79.9	31.7	69.1	147.7	764.8
August	301.5	95.1	43.9	79.3	32.3	69.7	148.0	769.7
September	305.2	94.5	44.6	78.4	33.0	69.9	146.8	772.3
October	306.9	94.1	45.7	77.7	33.7	69.8	144.0	772.0
November	306.4	93.9	46.8	77.6	34.3	69.8	140.0	769.0
December	304.3	94.1	47.3	78.2	34.7	70.1	135.7	764.4
January	302.3	94.3	47.0	79.0	34.8	70.7	132.6	760.5
February	301.7	94.3	45.9	79.6	34.5	71.4	131.4	758.7
March	303.8	94.1	44.2	79.7	34.2	71.7	132.2	760.1
April	308.3	94.1	42.6	79.4	34.1	71.2	134.3	764.1
May	314.1	94.3	41.3	79.0	34.3	69.8	136.5	769.4
June	319.8	94.9	40.4	78.7	34.6	68.2	138.2	774.7
1996 - 97 -								
July	325.2	95.6	39.6	78.7	35.0	66.5	139.2	779.8
August	330.0	96.3	39.1	78.9	35.4	64.9	139.7	784.3
PERCENTAGE CHANGE FROM PREVIOUS MONTH, TREND								
1995 - 96 -								
July	1.4	-0.3	-0.7	0.1	1.3	1.5	0.8	0.8
August	1.5	-0.6	0.2	-0.8	1.9	0.9	0.2	0.6
September	1.2	-0.6	1.6	-1.1	2.2	0.3	-0.8	0.3
October	0.6	-0.4	2.5	-0.9	2.1	-0.1	-1.9	0.0
November	-0.2	-0.2	2.4	-0.1	1.8	0.0	-2.8	-0.4
December	-0.7	0.2	1.1	0.8	1.2	0.4	-3.1	-0.6
January	-0.7	0.2	-0.6	1.0	0.3	0.9	-2.3	-0.5
February	-0.2	0.0	-2.3	0.8	-0.9	1.0	-0.9	-0.2
March	0.7	-0.2	-3.7	0.1	-0.9	0.4	0.6	0.2
April	1.5	0.0	-3.6	-0.4	-0.3	-0.7	1.6	0.5
May	1.9	0.2	-3.1	-0.5	0.6	-2.0	1.6	0.7
June	1.8	0.6	-2.2	-0.4	0.9	-2.3	1.2	0.7
1996 - 97 -								
July	1.7	0.7	-2.0	0.0	1.2	-2.5	0.7	0.7
August	1.5	0.7	-1.3	0.3	1.1	-2.4	0.4	0.6

NEW MOTOR VEHICLE REGISTRATIONS BY TYPE OF VEHICLE
South Australia

Period	Original			Seasonally adjusted			Trend estimate		
	Passenger Vehicles	Other vehicles	Total	Passenger Vehicles	Other vehicles	Total	Passenger Vehicles	Other vehicles	Total
ANNUAL									
1986-87	29,788	6,430	36,218						
1987-88	29,915	5,775	35,690
1988-89	31,920	6,816	38,736						
1989-90	35,211	7,908	43,019						
1990-91	34,753	6,619	41,372						
1991-92	32,351	5,333	37,684						
1992-93	32,894	5,577	38,471						
1993-94	32,806	5,781	38,587						
1994-95	35,830	6,736	42,566						
1995-96	36,067	6,828	42,895						
PERCENTAGE CHANGE FROM PREVIOUS YEAR									
1987-88	0.4	-10.2	-1.5						
1988-89	6.7	18.0	8.5						
1989-90	10.3	14.6	11.1						
1990-91	-1.3	-15.2	-3.8						
1991-92	-6.9	-19.4	-8.9						
1992-93	1.7	4.6	2.1						
1993-94	-0.3	3.7	0.3						
1994-95	9.2	16.5	10.3						
1995-96	0.7	1.4	0.8						
MONTHLY									
1994 - 95 -									
June	3,369	815	4,184	3,059	643	3,702	2,970	573	3,543
1995 - 96 -									
July	2,546	446	2,992	2,635	453	3,088	2,941	553	3,493
August	3,444	519	3,963	3,075	549	3,624	2,925	530	3,455
September	2,905	547	3,452	2,856	563	3,419	2,924	518	3,441
October	3,217	430	3,647	2,992	456	3,448	2,947	519	3,466
November	3,187	564	3,751	2,933	508	3,441	2,999	531	3,531
December	2,987	565	3,552	3,186	577	3,763	3,063	550	3,613
January	2,350	479	2,829	2,905	602	3,508	3,117	572	3,688
February	3,244	588	3,832	3,259	621	3,880	3,147	593	3,740
March	3,271	596	3,867	3,243	534	3,778	3,144	612	3,756
April	2,745	541	3,286	3,135	629	3,765	3,098	622	3,720
May	3,080	712	3,792	2,951	653	3,604	3,029	625	3,654
June	3,091	841	3,932	3,040	696	3,737	2,954	625	3,578
1996 - 97 -									
July	2,862	595	3,457	2,700	561	3,262	2,886	620	3,506
August	3,027	538	3,565	2,881	586	3,467	2,812	613	3,424
PERCENTAGE CHANGE FROM PREVIOUS MONTH									
1995 - 96 -									
July	-24.4	-45.3	-28.5	-13.9	-29.5	-16.6	-1.0	-3.5	-1.4
August	35.3	16.4	32.5	16.7	21.2	17.4	-0.5	-4.2	-1.1
September	-15.7	5.4	-12.9	-7.1	2.6	-5.7	0.0	-2.3	-0.4
October	10.7	-21.4	5.6	4.8	-19.0	0.8	0.8	0.2	0.7
November	-0.9	31.2	2.9	-2.0	11.4	-0.2	1.8	2.3	1.9
December	-6.3	0.2	-5.3	8.6	13.6	9.4	2.1	3.6	2.3
January	-21.3	-15.2	-20.4	-8.8	4.3	-6.8	1.8	4.0	2.1
February	38.0	22.8	35.5	12.2	3.2	10.6	1.0	3.7	1.4
March	0.8	1.4	0.9	-0.5	-14.0	-2.6	-0.1	3.2	0.4
April	-16.1	-9.2	-15.0	-3.3	17.8	-0.3	-1.5	1.6	-1.0
May	12.2	31.6	15.4	-5.9	3.8	-4.3	-2.2	0.5	-1.8
June	0.4	18.1	3.7	3.0	6.6	3.7	-2.5	0.0	-2.1
1996 - 97 -									
July	-7.4	-29.3	-12.1	-11.2	-19.4	-12.7	-2.3	-0.8	-2.0
August	5.8	-9.6	3.1	6.7	4.5	6.3	-2.6	-1.1	-2.3

**ACTUAL PRIVATE NEW CAPITAL EXPENDITURE BY SELECTED INDUSTRY AND TYPE OF ASSET
South Australia**

Period	Industry			Total	Type of asset	
	Mining	Manufacturing	Other selected industries		New buildings and structures	Equipment, plant and machinery
ANNUAL (\$ million)						
1990-91	122	742	988	1,852	628	1,224
1991-92	193	763	668	1,625	392	1,233
1992-93	218	564	739	1,522	416	1,105
1993-94	97	613	773	1,484	356	1,128
1994-95	115	829	1,162	2,106	351	1,755
1995-96	192	730	861	1,783	337	1,477
PERCENTAGE CHANGE FROM PREVIOUS YEAR						
1991-92	58.4	2.9	-32.3	-12.2	-37.5	0.8
1992-93	12.8	-26.1	10.6	-6.4	6.1	-10.4
1993-94	-55.5	8.7	4.6	-2.5	-14.5	2.0
1994-95	18.3	35.2	50.3	41.9	-1.4	55.6
1995-96	67.0	-11.9	-25.9	-15.3	-4.0	-15.8
QUARTERLY, ORIGINAL (\$ million)						
1993 - 94 - June	22	207	169	399	62	336
1994 - 95 - September	14	129	338	481	151	330
December	40	226	419	684	77	607
March	22	202	222	446	65	382
June	38	272	183	494	58	436
1995 - 96 - September	34	158	168	360	70	290
December	47	207	280	536	87	449
March	48	162	165	375	72	304
June	62	203	248	513	108	405
PERCENTAGE CHANGE FROM PREVIOUS QUARTER, ORIGINAL						
1994 - 95 - September	-35.4	-37.9	99.9	20.8	141.7	-1.7
December	175.0	75.6	23.8	42.2	-48.7	83.7
March	-45.7	-10.5	-46.9	-34.8	-16.4	-37.1
June	76.7	34.4	-17.7	10.8	-9.6	14.3
1995 - 96 - September	-9.7	-42.0	-8.4	-27.3	19.7	-33.5
December	38.2	31.5	67.4	49.2	24.7	55.0
March	0.8	-21.8	-41.0	-30.1	-17.9	-32.4
June	29.3	25.1	50.0	36.8	51.1	33.2
QUARTERLY, TREND (\$ million)						
1993 - 94 - June	n.a.	n.a.	n.a.	427	107	320
1994 - 95 - September				513	105	407
December				556	89	468
March				523	71	452
June				462	65	397
1995 - 96 - September				429	69	360
December				438	76	363
March				455	92	363
June				476	113	363
PERCENTAGE CHANGE FROM PREVIOUS QUARTER, TREND						
1994 - 95 - September	20.1	-1.9	27.2
December				8.4	-15.2	15.0
March				-5.9	-20.2	-3.4
June				-11.7	-8.5	-12.2
1995 - 96 - September				-7.1	6.2	-9.3
December				2.1	10.1	0.8
March				3.9	21.1	0.0
June				4.6	22.8	0.0

TOURIST ACCOMMODATION
South Australia

Period	Hotels, motels, guesthouses with facilities			Holiday flats, units and houses			Short-term caravan parks		
	Number of guest rooms	Room occupancy (per cent)	Takings (\$'000)	Number of flats, units and houses	Unit occupancy (per cent)	Takings (\$'000)	Number of sites	Site occupancy (per cent)	Takings (\$'000)
	ANNUAL								
1986-87	8,497	52.9	79,254	n.a.	n.a.	n.a.	18,773	18.1	12,647
1987-88	9,156	50.8	89,321	1,105	45.4	8,109	18,926	17.8	13,248
1988-89	9,396	50.5	102,737	1,171	45.8	9,792	19,195	17.4	14,711
1989-90	10,316	52.0	121,788	1,113	48.4	11,381	19,847	18.4	17,174
1990-91	10,445	48.0	128,634	1,210	43.9	10,339	19,794	17.7	18,102
1991-92	10,745	46.6	130,578	1,302	40.4	10,492	20,601	17.1	19,111
1992-93	10,632	46.5	129,882	1,338	40.2	10,740	20,038	22.3	20,113
1993-94	10,597	48.6	138,782	1,338	40.9	11,700	19,591	23.7	20,790
1994-95	10,594	51.3	149,698	1,342	40.0	11,644	20,175	24.5	22,537
1995-96	10,772	52.4	161,136	1,356	41.5	12,844	20,187	24.9	23,578
PERCENTAGE CHANGE FROM PREVIOUS YEAR									
1987-88	7.8	..	12.7	n.a.	..	n.a.	0.8	..	4.8
1988-89	2.6	..	15.0	6.0	..	20.8	1.4	..	11.0
1989-90	9.8	..	18.5	-5.0	..	16.2	3.4	..	16.7
1990-91	1.3	..	5.6	8.7	..	-9.2	-0.3	..	5.4
1991-92	2.9	..	1.5	7.6	..	1.5	4.1	..	5.6
1992-93	-1.1	..	-0.5	2.8	..	2.4	-2.7	..	5.2
1993-94	-0.3	..	6.9	0.0	..	8.9	-2.2	..	3.4
1994-95	0.0	..	7.9	0.3	..	-0.5	3.0	..	8.4
1995-96	1.7	..	7.6	1.0	..	10.3	0.1	..	4.6
QUARTERLY									
1993 - 94 -									
March	10,625	50.0	35,007	1,321	50.9	3,546	19,606	28.4	6,611
June	10,597	47.4	32,547	1,338	36.1	2,313	19,591	24.3	4,893
1994 - 95 -									
September	10,560	48.7	34,734	1,326	34.0	2,418	19,988	20.9	4,211
December	10,608	53.0	41,265	1,360	40.0	3,000	20,126	24.5	5,881
March	10,603	53.4	37,897	1,337	50.1	3,776	20,132	28.4	7,047
June	10,605	50.0	35,802	1,346	35.9	2,451	20,452	24.3	5,597
1995 - 96 -									
September	10,703	50.3	37,077	1,289	32.4	2,273	20,350	22.3	4,809
December	10,763	52.9	42,999	1,297	40.3	3,120	20,128	24.5	6,103
March	10,757	55.1	41,938	1,388	54.9	4,512	20,154	27.8	6,931
June	10,865	51.4	39,121	1,451	38.0	2,940	20,122	25.0	5,736
PERCENTAGE CHANGE FROM PREVIOUS QUARTER									
1993 - 94 -									
June	-0.3	..	-7.0	1.3	..	-34.8	-0.1	..	-26.0
1994 - 95 -									
September	-0.3	..	6.7	-0.9	..	4.5	2.0	..	-13.9
December	0.5	..	18.8	2.6	..	24.1	0.7	..	34.9
March	0.0	..	-8.2	-1.7	..	25.9	0.0	..	24.0
June	0.0	..	-5.5	0.7	..	-35.1	1.6	..	-20.6
1995 - 96 -									
September	0.9	..	3.6	-4.2	..	-7.3	-0.5	..	-14.1
December	0.6	..	16.0	0.6	..	37.3	-1.1	..	26.9
March	-0.1	..	-2.5	7.0	..	44.6	0.2	..	13.6
June	1.0	..	-6.7	4.5	..	-34.8	-0.2	..	-17.2

BUILDING APPROVALS
South Australia

Period	Number of dwelling units				Value (\$ million)			
	Houses		Total(a)		New residential building	Alterations and additions to residential building	Non-residential building	Total building
	Private sector	Total	Private sector	Total				
ANNUAL								
1987-88	6,276	6,900	7,383	9,009	497	94	749	1,340
1988-89	7,526	8,006	9,642	11,238	690	109	895	1,694
1989-90	7,246	7,675	10,180	11,701	733	110	914	1,757
1990-91	8,351	8,633	10,418	11,426	755	119	591	1,465
1991-92	8,613	8,931	10,254	11,290	756	124	627	1,506
1992-93	9,710	10,087	11,548	12,341	841	133	418	1,392
1993-94	9,470	9,901	11,046	11,777	839	122	375	1,336
1994-95	7,757	8,147	9,208	9,762	740	120	493	1,353
1995-96	4,930	5,109	5,760	5,968	469	119	566	1,155
PERCENTAGE CHANGE FROM PREVIOUS YEAR								
1988-89	19.9	16.0	30.6	24.7	38.8	16.0	19.5	26.4
1989-90	-3.7	-4.1	5.6	4.1	6.1	1.2	2.1	3.7
1990-91	15.2	12.5	2.3	-2.4	3.1	8.6	-35.4	-16.6
1991-92	3.1	3.5	-1.6	-1.2	0.1	3.9	6.1	2.8
1992-93	12.7	12.9	12.6	9.3	11.3	7.1	-33.2	-7.6
1993-94	-2.5	-1.8	-4.3	-4.6	-0.2	-8.0	-10.4	-4.0
1994-95	-18.1	-17.7	-16.6	-17.1	-11.8	-1.7	31.5	1.3
1995-96	-36.4	-37.3	-37.4	-38.9	-36.5	-0.7	14.8	-14.7
MONTHLY, ORIGINAL								
1995 - 96 -								
July	445	463	550	576	45.2	9.0	36.3	90.6
August	564	608	623	671	52.3	11.2	31.5	94.9
September	437	467	547	592	45.0	12.1	31.1	88.2
October	415	422	512	519	39.2	10.4	69.2	118.8
November	388	390	525	527	40.8	10.3	33.1	84.2
December	354	367	421	434	34.5	8.9	36.1	79.5
January	299	306	346	355	29.2	8.5	64.4	102.1
February	393	418	461	486	39.6	8.4	16.5	64.5
March	388	393	432	437	36.5	11.4	49.9	97.8
April	380	386	424	430	31.9	8.5	27.5	67.9
May	464	483	486	505	40.8	10.0	143.6	194.3
June	403	406	433	436	34.3	10.5	26.9	71.8
1996 - 97 -								
July	476	481	523	528	42.8	7.7	41.9	92.5
August	484	492	536	547	45.2	10.3	60.9	116.4
MONTHLY, TREND								
1995 - 96 -								
July	443	470	529	558	n.a.	n.a.	n.a.	n.a.
August	433	451	528	560	n.a.	n.a.	n.a.	n.a.
September	424	452	522	555				
October	413	438	510	540				
November	400	422	488	516				
December	393	412	469	493				
January	392	408	454	476				
February	395	408	446	462				
March	403	411	445	454				
April	410	413	449	452				
May	414	414	454	453				
June	417	418	458	458				
1996 - 97 -								
July	420	423	464	466				
August	420	427	468	474				
PERCENTAGE CHANGE FROM PREVIOUS MONTH, TREND								
1995 - 96 -								
August	-2.3	-1.9	-0.2	0.4	n.a.	n.a.	n.a.	n.a.
September	-2.1	-2.0	-1.1	-0.9				
October	-2.6	-3.1	-2.3	-2.7				
November	-3.1	-3.7	-4.3	-4.4				
December	-1.8	-2.4	-3.9	-4.5				
January	-0.3	-1.0	-3.2	-3.4				
February	0.8	0.0	-1.8	-2.9				
March	2.0	0.7	-0.2	-1.7				
April	1.7	0.5	0.9	-0.4				
May	1.0	0.2	1.1	0.2				
June	0.7	1.0	0.9	1.1				
1996 - 97 -								
July	0.7	1.2	1.3	1.7				
August	0.0	0.9	0.9	1.7				

(a) Total includes the number of self-contained dwelling units approved as part of the construction of non-residential building and alterations to existing buildings (including conversions to dwelling units).

BUILDING COMMENCEMENTS
South Australia

Period	Number of new dwelling units				Value (\$ million)				
	Houses		Total (a)		New residential building	Alterations and additions to residential building	Non-residential building		Total building
	Private sector	Total	Private sector	Total			Private sector	Total	
ANNUAL									
1984-85	8,502	9,641	11,782	14,294	660.3	66.0	345.6	509.7	1,236.0
1985-86	6,334	7,267	8,840	10,779	558.5	80.9	430.7	602.4	1,241.7
1986-87	5,345	6,458	6,552	8,987	475.7	75.3	430.1	674.4	1,225.4
1987-88	5,664	6,388	6,723	8,511	472.9	92.2	527.2	718.8	1,283.8
1988-89	7,132	7,580	8,853	10,304	646.2	103.7	760.3	964.1	1,709.9
1989-90	6,734	7,174	9,421	10,989	718.2	111.6	669.6	934.2	1,763.9
1990-91	7,863	8,177	9,683	10,837	727.5	118.2	367.1	554.0	1,399.6
1991-92	8,036	8,344	9,635	10,700	727.2	125.1	344.5	607.8	1,460.1
1992-93	9,122	9,416	10,889	11,647	816.2	122.4	205.5	458.7	1,397.2
1993-94	9,159	9,590	10,707	11,501	845.3	126.5	209.9	373.0	1,344.8
1994-95	7,745	8,210	9,115	9,794	765.5	125.3	251.7	373.0	1,344.8
1995-96	4,838	5,072	5,693	5,962	496.6	122.1	419.4	518.5	1,409.3
QUARTERLY									
1993 - 94 -									
March	1,977	2,023	2,412	2,556	188.1	29.8	51.1	97.6	315.4
June	2,235	2,396	2,629	2,883	213.4	30.2	55.2	93.5	337.1
1994 - 95 -									
September	2,413	2,526	2,857	3,085	235.6	34.3	57.0	101.8	371.7
December	2,303	2,435	2,691	2,873	221.1	31.8	52.8	99.5	352.4
1995 - 96 -									
March	1,631	1,735	1,942	2,073	167.9	26.4	55.6	92.1	286.4
June	1,396	1,512	1,625	1,763	140.9	32.8	86.3	225.1	398.8
September	1,398	1,504	1,651	1,771	142.4	29.4	69.5	108.4	280.3
December	1,242	1,295	1,519	1,587	133.9	34.0	85.5	119.5	287.4
1996 - 97 -									
March	1,044	1,089	1,248	1,295	109.2	29.4	80.1	139.9	278.4
June	1,154	1,184	1,275	1,309	111.1	29.2	184.2	230.6	370.9

(a) Includes conversions

VALUE OF BUILDING WORK DONE DURING PERIOD
South Australia

Period	New residential building				Alterations and additions to residential buildings	Non-residential building		Total building	
	Houses		Total			Private sector	Total	Private sector	Total
	Private sector	Total	Private sector	Total					
ANNUAL (\$ million)									
1984-85	414.4	456.3	542.3	626.7	65.6	285.1	433.4	891.6	1,125.7
1985-86	369.2	411.5	497.9	585.1	78.7	413.6	589.7	988.5	1,253.4
1986-87	310.0	364.8	385.4	492.2	78.4	447.9	645.2	908.1	1,215.8
1987-88	343.8	381.1	391.4	467.7	88.2	551.8	811.2	1,027.0	1,367.1
1988-89	450.2	469.2	538.8	597.0	104.1	657.5	902.2	1,297.3	1,603.3
1989-90	493.8	518.9	657.4	724.9	116.3	743.2	988.6	1,514.0	1,829.8
1990-91	578.3	600.2	713.6	782.3	122.0	621.9	876.6	1,455.4	1,780.8
1991-92	591.5	607.5	693.4	748.5	125.1	310.3	484.1	1,127.5	1,357.6
1992-93	647.2	660.9	743.8	780.6	127.1	297.9	570.9	1,166.3	1,478.6
1993-94	719.1	746.4	828.9	876.3	132.0	217.7	462.1	1,177.2	1,470.4
1994-95	659.6	693.6	766.1	816.4	129.4	271.6	476.9	1,164.3	1,422.7
1995-96	441.6	460.7	513.0	534.9	130.5	295.0	525.8	936.9	1,191.2
QUARTERLY (\$ million)									
1993 - 94 -									
March	167.4	172.2	192.3	202.3	32.4	50.2	96.8	274.3	331.5
June	175.7	182.9	204.2	215.3	30.8	53.1	111.0	287.5	357.2
1994 - 95 -									
September	185.6	193.5	215.3	230.8	37.4	63.7	113.5	316.1	381.8
December	185.3	195.7	216.0	231.4	35.6	63.0	117.8	313.1	384.7
1995 - 96 -									
March	153.3	159.5	179.5	187.9	25.1	57.2	104.4	261.4	317.4
June	135.3	144.8	155.3	166.3	31.2	87.8	141.3	273.7	338.8
September	117.9	124.5	138.8	146.6	31.4	72.7	121.7	241.7	299.6
December	119.2	125.6	137.7	144.8	39.9	87.1	142.9	264.7	327.6
1996 - 97 -									
March	101.6	105.4	118.8	123.1	26.7	63.4	122.0	208.6	271.8
June	102.8	105.3	117.7	120.4	32.6	71.8	139.2	222.0	292.2

PRODUCTION, SELECTED COMMODITIES
South Australia

Period	Footwear (pairs)	Gas (m megajoules)	Electricity (including NT) ('000 kWh)	Coal (tonnes)	Sawn timber(a) (m ³)
ANNUAL					
1986-87	2,147,468	82,550	9,666,694	2,435,010	194,458
1987-88	1,982,301	83,101	10,137,144	2,566,347	254,453
1988-89	2,062,085	86,546	10,588,647	2,674,215	292,335
1989-90	1,749,112	85,070	10,665,118	2,921,861	228,156
1990-91	1,837,602	73,265	8,878,357	2,441,040	240,193
1991-92	1,852,890	78,210	10,025,649	2,819,880	271,803
1992-93	1,406,178	83,000	10,226,734	2,753,610	317,096
1993-94	1,382,949	89,382	10,560,251	2,643,000	364,961
1994-95	1,430,417	86,123	10,051,056	2,554,560	392,349
1995-96	n.a.	76,074	8,733,503	2,409,120	413,545
PERCENTAGE CHANGE FROM PREVIOUS YEAR					
1987-88	-7.7	0.7	4.9	5.4	30.9
1988-89	4.0	4.1	4.5	4.2	14.9
1989-90	-15.2	-1.7	0.7	9.3	-22.0
1990-91	5.1	-13.9	-16.8	-16.5	5.3
1991-92	0.8	6.7	12.9	15.5	13.1
1992-93	-24.1	6.1	2.0	-2.4	16.7
1993-94	-1.7	7.7	3.3	-4.0	15.1
1994-95	3.4	-3.6	-4.8	-3.3	7.5
1995-96	n.a.	-11.7	-13.1	-5.7	5.4
MONTHLY/QUARTERLY (b), ORIGINAL					
1994 - 95 -					
June	128,896	7,501	820,600	243,720	104,789
1995 - 96 -					
July	116,044	8,342	878,070	227,340	..
August	123,733	7,667	791,871	214,680	..
September	134,797	6,201	685,549	214,200	121,851
October	95,340	6,922	671,726	119,400	..
November	108,312	6,252	665,680	141,660	..
December	89,857	5,126	673,409	208,920	112,148
January	80,341	4,990	713,816	232,020	..
February	124,734	5,548	742,084	233,280	..
March	151,541	6,163	765,278	254,940	88,684
April	101,261	6,088	632,648	159,960	..
May	n.a.	5,728	725,035	186,600	..
June	n.a.	7,047	788,337	216,120	90,862
1996 - 97 -					
July	n.a.	7,478	805,153	242,820	..
August	n.a.	7,077	780,265	231,720	..
PERCENTAGE CHANGE FROM PREVIOUS MONTH/QUARTER (b)					
1995 - 96 -					
July	-10.0	11.2	7.0	-6.7	..
August	6.6	-8.1	-9.8	-5.6	..
September	8.9	-19.1	-13.4	-0.2	16.3
October	-29.3	11.6	-2.0	-44.3	..
November	13.6	-9.7	-0.9	18.6	..
December	-17.0	-18.0	1.2	47.5	-8.0
January	-10.6	-2.7	6.0	11.1	..
February	55.3	11.2	4.0	0.5	..
March	21.5	11.1	3.1	9.3	-20.9
April	-33.2	-1.2	-17.3	-37.3	..
May	n.a.	-5.9	14.6	16.7	..
June	n.a.	23.0	8.7	15.8	2.5
1996 - 97 -					
July	n.a.	6.1	2.1	12.4	..
August	n.a.	-5.4	-3.1	-4.6	..

(a) From Australian softwood logs only.

(b) Sawn timber production data available quarterly only.

PRODUCTION, LIVESTOCK PRODUCTS AND SELECTED COMMODITIES
South Australia

Period	Chicken	Pigmeat	Beef	Mutton	Lamb	Cheese	Wheat flour, other than self-raising
ANNUAL (tonnes)							
1984-85	35,882	35,508	79,111	35,800	30,136	23,273	74,643
1985-86	34,235	37,432	77,898	41,507	31,485	25,086	73,926
1986-87	33,776	40,761	90,283	43,934	32,415	27,438	80,310
1987-88	34,907	36,671	91,701	45,562	34,335	25,497	91,325
1988-89	32,946	40,364	87,160	42,159	36,203	24,704	96,418
1989-90	35,248	40,815	99,699	50,939	38,052	22,774	88,503
1990-91	31,945	38,644	87,036	65,434	32,038	24,522	83,727
1991-92	36,978	34,538	90,661	72,578	29,941	23,494	81,065
1992-93	38,619	38,153	96,338	65,689	39,334	26,140	87,761
1993-94	40,671	38,394	94,395	71,354	45,199	26,674	84,683
1994-95	39,103	32,063	99,108	66,759	36,147	29,154	80,666
1995-96	37,691	26,711	90,958	52,714	37,829	31,496	97,425
PERCENTAGE CHANGE FROM PREVIOUS YEAR							
1985-86	-4.6	2.5	-1.5	15.9	4.5	7.8	-1.0
1986-87	-1.3	8.9	15.9	5.8	3.0	9.4	8.6
1987-88	3.3	-10.0	1.6	3.7	5.9	-7.1	13.7
1988-89	-5.6	10.1	-5.0	-7.5	5.4	-3.1	5.6
1989-90	7.0	1.1	14.4	20.8	5.1	-7.8	-8.2
1990-91	-9.4	-5.3	-12.7	28.5	-15.8	7.7	-5.4
1991-92	15.8	-10.6	4.2	10.9	-6.5	-4.2	-3.2
1992-93	4.4	10.5	6.3	-9.5	31.4	11.3	8.3
1993-94	5.3	0.6	-2.0	8.6	14.9	2.0	-3.5
1994-95	-3.9	-16.5	5.0	-6.4	-20.0	9.3	-4.7
1995-96	-3.6	-16.7	-8.2	-21.0	4.7	8.0	20.8
MONTHLY (tonnes)							
1994 - 95 - June	3,042	2,370	7,719	2,495	2,046	2,138	7,366
1995 - 96 - July	3,465	2,161	3,526	1,967	1,799	2,180	6,104
August	2,656	2,614	6,588	3,061	3,204	2,772	7,575
September	3,111	2,240	8,850	4,525	4,212	2,805	7,479
October	2,961	2,125	9,382	5,002	4,455	3,280	6,878
November	3,182	2,608	9,908	7,065	4,008	2,706	8,187
December	3,419	1,907	7,036	3,906	2,691	2,912	8,952
January	3,286	2,092	9,208	5,711	2,693	2,419	6,566
February	2,991	2,297	9,065	6,320	3,213	4,806	8,503
March	3,361	1,899	8,091	5,468	3,385	1,357	8,283
April	3,438	1,985	6,352	3,523	2,965	2,122	7,665
May	2,880	2,646	7,037	3,286	3,282	2,174	14,422
June	2,942	2,136	5,913	2,880	1,921	1,963	6,811
1996 - 97 - July	3,110	2,735	5,894	2,485	1,908	n.y.a.	7,099
August	2,832	2,450	7,117	2,490	1,863	n.y.a.	7,468
PERCENTAGE CHANGE FROM PREVIOUS MONTH							
1995 - 96 - July	13.9	-8.8	-54.3	-21.1	-12.1	2.0	-17.1
August	-23.3	21.0	86.8	55.6	78.1	27.2	24.1
September	17.1	-14.3	34.3	47.9	31.5	1.2	-1.3
October	-4.8	-5.1	6.0	10.5	5.8	32.8	-8.0
November	7.5	22.8	5.6	41.2	-10.0	-17.5	19.0
December	7.4	-26.9	-29.0	-44.7	-32.9	7.6	9.3
January	-3.9	9.7	30.9	46.2	0.1	-16.9	-26.7
February	-9.0	9.8	-1.6	10.7	19.3	98.7	29.5
March	12.3	-17.3	-10.7	-13.5	5.3	-71.8	-2.6
April	2.3	4.5	-21.5	-35.6	-12.4	56.4	-7.5
May	-16.2	33.3	10.8	-6.7	10.7	2.5	88.2
June	2.2	-19.3	-16.0	-12.4	-41.5	-9.7	-52.8
1996 - 97 - July	5.7	28.0	-0.3	-13.7	-0.7	n.y.a.	4.2
August	-8.9	-10.4	20.7	0.2	-2.4	n.y.a.	5.2

CONSUMER PRICE INDEX: BY GROUP
Adelaide

Period	Food	Clothing	Housing	Household equipment and operation	Transport- ation	Tobacco and alcohol	Health and personal care	Recreation and education	All groups
ANNUAL AVERAGE (1989-90 = 100)									
1985-86	77.0	74.0	73.4	78.9	74.8	72.7	63.2	74.9	74.7
1986-87	83.2	81.8	76.9	84.3	83.0	79.4	75.6	82.1	81.5
1987-88	87.6	88.2	79.5	89.9	88.6	85.7	84.0	89.6	87.0
1988-89	95.2	95.3	87.0	95.1	94.2	92.5	90.8	94.6	93.3
1989-90	100.0	100.0	100.0	100.0	100.0	100.0	100.0	100.0	100.0
1990-91	103.8	103.6	104.1	105.4	107.0	112.0	113.4	104.8	106.2
1991-92	106.0	105.3	100.4	107.5	110.5	118.6	127.8	107.7	108.9
1992-93	109.3	107.0	94.3	107.6	115.0	131.2	134.9	110.7	111.2
1993-94	111.7	106.6	92.1	108.0	117.8	141.5	142.7	113.7	113.4
1994-95	115.1	104.9	97.8	109.2	120.2	148.9	151.3	116.3	116.9
1995-96	118.2	105.1	103.6	112.1	124.5	160.1	158.9	118.0	121.2
PERCENTAGE CHANGE FROM PREVIOUS YEAR, ANNUAL AVERAGE									
1986-87	8.1	10.5	4.8	6.8	11.0	9.2	19.6	9.6	9.1
1987-88	5.3	7.8	3.4	6.6	6.7	7.9	11.1	9.1	6.7
1988-89	8.7	8.0	9.4	5.8	6.3	7.9	8.1	5.6	7.2
1989-90	5.0	4.9	14.9	5.2	6.2	8.1	10.1	5.7	7.2
1990-91	3.8	3.6	4.1	5.4	7.0	12.0	13.4	4.8	6.2
1991-92	2.1	1.6	-3.6	2.0	3.3	5.9	12.7	2.8	2.5
1992-93	3.1	1.6	-6.1	0.1	4.1	10.6	5.6	2.8	2.1
1993-94	2.2	-0.4	-2.3	0.4	2.4	7.9	5.8	2.7	2.0
1994-95	3.0	-1.6	6.2	1.1	2.0	5.2	6.0	2.2	3.1
1995-96	2.7	0.2	5.9	2.7	3.6	7.6	5.0	1.5	3.7
QUARTERLY (1989-90=100.0)									
1993 - 94 - June	113.0	105.8	91.9	108.2	118.5	144.5	148.2	114.8	114.4
1994 - 95 - September	114.5	105.2	92.4	108.3	119.6	144.2	148.3	115.1	114.9
December	114.3	105.1	95.6	108.7	119.8	147.8	148.7	116.2	116.0
March	115.7	104.2	100.8	109.5	119.9	150.2	153.0	117.2	117.8
June	115.7	105.1	102.2	110.2	121.4	153.2	155.3	116.5	118.8
1995 - 96 - September	117.8	104.8	102.7	111.5	124.4	154.8	155.4	116.5	120.1
December	118.2	105.2	103.8	112.0	124.3	159.7	158.7	117.3	121.1
March	118.2	104.9	103.9	112.4	123.9	162.2	161.0	118.9	121.6
June	118.4	105.5	103.9	112.3	125.3	163.6	160.6	119.2	122.0
1996 - 97 - September	119.2	105.5	103.5	113.0	124.4	164.7	160.9	119.2	122.2
PERCENTAGE CHANGE FROM SAME QUARTER OF PREVIOUS YEAR									
1993 - 94 - June	2.4	-1.7	-2.0	0.8	2.1	5.9	6.7	2.2	1.9
1994 - 95 - September	3.7	-2.1	-1.0	0.7	2.0	3.9	6.9	2.0	2.0
December	2.7	-1.9	4.4	0.5	1.9	5.6	7.4	2.8	2.8
March	3.3	-1.7	10.0	1.5	2.0	5.3	5.2	2.7	3.7
June	2.4	-0.7	11.2	1.8	2.4	6.0	4.8	1.5	3.8
1995 - 96 - September	2.9	-0.4	11.1	3.0	4.0	7.4	4.8	1.2	4.5
December	3.4	0.1	8.6	3.0	3.8	8.1	6.7	0.9	4.4
March	2.2	0.7	3.1	2.6	3.3	8.0	5.2	1.5	3.2
June	2.3	0.4	1.7	1.9	3.2	6.8	3.4	2.3	2.7
1996-97 September	1.2	0.7	0.8	1.3	0.0	6.4	3.5	2.3	1.7
PERCENTAGE CHANGE FROM PREVIOUS QUARTER									
1994 - 95 - September	1.3	-0.6	0.5	0.1	0.9	-0.2	0.1	0.3	0.4
December	-0.2	-0.1	3.5	0.4	0.2	2.5	0.3	1.0	1.0
March	1.2	-0.9	5.4	0.7	0.1	1.6	2.9	0.9	1.6
June	0.0	0.9	1.4	0.6	1.3	2.0	1.5	-0.6	0.8
1995 - 96 - September	1.8	-0.3	0.5	1.2	2.5	1.0	0.1	0.0	1.1
December	0.3	0.4	1.1	0.4	-0.1	3.2	2.1	0.7	0.8
March	0.0	-0.3	0.1	0.4	-0.3	1.6	1.4	1.4	0.4
June	0.2	0.6	0.0	-0.1	1.1	0.9	-0.2	0.3	0.3
1996-97 September	0.7	0.0	-0.4	0.6	-0.7	0.7	0.2	0.0	0.2

**AVERAGE RETAIL PRICES OF SELECTED CONSUMER ITEMS
Adelaide (cents)**

Item	Unit	Quarter				
		June 1995	Sept 1995	Dec. 1995	Mar. 1996	June 1996
Milk, carton, supermarket sales	1 litre	110	114	114	114	113
Cheese, processed, sliced, wrapped	500g	323	327	335	334	337
Butter	500g	151	163	165	165	167
Bread, white loaf, sliced, supermarket sales	680g	139	148	148	152	141
Self-raising flour	2kg	204	204	213	228	238
Beef:						
Rump steak	1kg	1,121	1,177	1,130	1,122	1,168
Comed silverside	1kg	651	639	642	637	645
Lamb:						
Leg	1kg	533	561	516	608	584
Loin chops	1kg	699	745	726	799	812
Forequarter chops	1kg	507	545	514	566	544
Pork:						
Leg	1kg	589	598	593	598	608
Loin chops	1kg	736	747	764	764	765
Chicken, frozen	1kg	323	330	331	350	348
Bacon, middle rashers	250g pkt	291	296	287	303	289
Sausages	1kg	370	374	366	356	358
Potatoes	1kg	87	106	134	72	70
Onions	1kg	118	181	192	108	74
Peaches, canned	825g	186	190	185	186	189
Eggs, 55g	doz	185	210	230	232	240
Sugar, white	2kg	180	174	186	189	180
Tea	250g	165	162	166	175	159
Coffee, instant, jar	150g	546	563	552	552	528
Margarine, polyunsaturated	500g	152	140	148	141	141
Petrol:						
Leaded	1 litre	72.0	75.3	74.0	73.6	75.9
Unleaded	1 litre	69.8	73.1	71.7	71.3	73.6

**ESTIMATED RESIDENT POPULATION AND COMPONENTS OF POPULATION CHANGE
South Australia**

Period	Live births(a)	Deaths(a)	Components of population change			Total increase	Population at end of period
			Natural increase	Net migration			
				Interstate	Overseas (b)		
ANNUAL							
1985-86	19,657	10,427	9,230	-1,417	5,084	11,353	1,382,550
1986-87	19,628	10,577	9,051	-3,977	6,200	10,214	1,392,764
1987-88	19,288	10,799	8,489	-1,240	5,952	12,145	1,404,909
1988-89	19,528	10,814	8,664	-221	6,665	14,120	1,419,029
1989-90	19,653	11,329	8,253	-252	5,762	13,027	1,432,056
1990-91	19,966	11,120	8,767	1,545	4,619	14,243	1,446,299
1991-92	19,530	11,035	8,532	-133	2,897	11,296	1,457,595
1992-93	19,686	11,163	8,403	-4,650	1,546	5,299	1,462,894
1993-94	20,036	11,743	7,949	-3,466	1,994	6,477	1,469,371
1994-95	19,559	11,496	8,022	-6,529	3,102	4,595	1,473,596
1995-96	18,991	11,186	n.y.a.	n.y.a.	n.y.a.	n.y.a.	n.y.a.
MONTHLY/QUARTERLY							
1994 - 95 - June	1,710	941	1,967	-1,846	965	1,086	1,473,596
1995 - 96 - July	1,506	937
August	1,617	1,180
September	1,728	963	1,759	-2,157	1,106	708	1,474,304
October	1,528	1,057
November	1,685	929
December	1,397	842	1,752	-1,512	946	1,186	1,475,490
January	1,663	932
February	1,696	804
March	1,568	838	2,353	-1,476	1,370	2,247	1,477,700
April	1,417	773
May	1,755	1,114
June	1,451	871	1,865	-1,093	n.y.a.	n.y.a.	n.y.a.
1996 - 97 - July	1,730	1,034
August	1,651	1,004
September	1,446	n.y.a.	n.y.a.	n.y.a.	n.y.a.	n.y.a.	n.y.a.

(a) Registrations.

(b) Includes category jumping.

LABOUR FORCE STATUS OF THE CIVILIAN POPULATION
South Australia

Period	Employed Full-time Males	Employed Full-time Females	Employed Part-time Males	Employed Part-time Females	Employed Total Males	Employed Total Females	Unem- ployed Males	Unem- ployed Females	Labour Force Males	Labour Force Females
ANNUAL AVERAGE ('000)										
1986-87	337.1	137.0	25.4	106.6	362.5	243.6	35.6	24.5	398.1	268.1
1987-88	334.4	137.4	29.3	111.6	363.7	249.0	35.1	24.9	398.8	273.9
1988-89	345.5	145.3	29.7	115.8	375.2	261.1	32.2	22.5	407.4	283.6
1989-90	352.0	149.3	31.5	119.8	383.5	269.1	28.5	20.9	412.0	290.0
1990-91	345.2	148.4	34.1	125.7	379.3	274.1	37.8	25.3	417.1	299.4
1991-92	323.3	145.7	37.5	121.6	360.8	267.3	50.0	29.3	410.8	296.6
1992-93	322.2	143.2	39.2	126.8	361.4	270.0	51.9	29.9	413.3	299.9
1993-94	322.0	146.3	40.0	127.0	362.0	273.3	47.3	29.9	409.3	303.2
1994-95	323.1	151.5	42.6	131.3	365.7	282.8	44.6	28.7	410.3	311.5
1995-96	325.6	150.0	45.4	136.4	371.0	286.4	42.6	26.3	413.6	312.7
PERCENTAGE CHANGE FROM PREVIOUS YEAR, ANNUAL AVERAGE										
1987-88	-0.8	0.3	15.4	4.7	0.3	2.2	-1.4	1.6	0.2	2.2
1988-89	3.3	5.7	1.4	3.8	3.2	4.9	-8.3	-9.6	2.2	3.5
1989-90	1.9	2.8	6.1	3.5	2.2	3.1	-11.5	-7.1	1.1	2.3
1990-91	-1.9	-0.6	8.3	4.9	-1.1	1.9	32.6	21.1	1.2	3.2
1991-92	-6.3	-1.8	10.0	-3.3	-4.9	-2.5	32.3	15.8	-1.5	-0.9
1992-93	-0.3	-1.7	4.5	4.3	0.2	1.0	3.8	2.0	0.6	1.1
1993-94	-0.1	2.2	2.0	0.2	0.2	1.2	-8.9	0.0	-1.0	1.1
1994-95	0.3	3.6	5.5	3.4	1.0	3.5	-5.7	-4.0	0.2	2.7
1995-96	0.8	-1.0	6.6	3.8	1.5	1.3	-4.6	-8.3	0.8	0.4
MONTHLY, ORIGINAL ('000)										
1995 - 96 -										
September	326.4	148.7	46.6	136.3	373.0	285.0	44.9	25.8	418.0	310.8
October	324.7	148.9	44.6	132.5	369.3	281.4	43.5	24.7	412.8	306.1
November	328.7	151.7	43.7	133.7	372.4	285.4	40.5	23.5	412.9	308.9
December	334.2	156.9	43.2	132.0	377.4	289.0	40.7	25.8	418.1	314.7
January	324.4	149.6	45.8	127.9	370.2	277.5	45.5	29.3	415.7	306.8
February	326.6	150.1	43.4	132.4	369.9	282.6	46.8	29.6	416.8	312.2
March	324.6	147.9	45.9	139.8	370.5	287.6	42.0	27.0	412.5	314.6
April	321.5	147.1	49.6	143.2	371.1	290.2	42.3	27.0	413.4	317.2
May	322.8	151.3	43.8	140.3	366.6	291.6	41.4	26.8	408.0	318.5
June	322.2	148.2	47.7	145.4	369.9	293.6	38.1	23.7	407.9	317.3
1996 - 97 -										
July	323.7	151.0	47.0	141.6	370.7	292.6	38.2	25.9	408.9	318.5
August	315.9	148.2	49.9	142.0	365.8	290.2	41.3	26.6	407.1	316.8
September	316.7	152.0	49.0	141.5	365.7	293.5	43.0	27.5	408.7	320.9
MONTHLY, TREND ('000)										
1995 - 96 -										
September	325.3	149.9	46.0	135.5	371.3	285.4	43.8	25.7	415.1	311.1
October	326.6	149.6	45.2	134.7	371.8	284.3	43.0	25.5	414.8	309.8
November	327.4	149.5	44.7	134.0	372.1	283.5	42.4	25.5	414.5	309.0
December	327.5	149.5	44.4	134.0	371.9	283.5	42.1	25.6	414.0	309.1
January	327.0	149.4	44.3	134.9	371.3	284.3	42.2	25.8	413.5	310.1
February	326.2	149.5	44.4	136.3	370.6	285.8	42.3	26.0	413.0	311.8
March	325.2	149.7	45.0	137.9	370.1	287.6	42.4	26.2	412.4	313.8
April	324.1	150.1	45.6	139.3	369.7	289.4	42.1	26.4	411.8	315.8
May	323.0	150.6	46.5	140.2	369.5	290.8	41.7	26.6	411.2	317.4
June	322.1	151.0	47.3	140.5	369.4	291.5	41.2	26.9	410.6	318.4
1996 - 97 -										
July	321.0	151.1	48.1	140.6	369.1	291.7	41.0	27.4	410.1	319.1
August	319.8	151.2	48.9	140.5	368.7	291.7	41.0	27.8	409.7	319.5
September	318.8	151.1	49.4	140.2	368.2	291.3	41.3	28.3	409.5	319.5
PERCENTAGE CHANGE FROM PREVIOUS MONTH, TREND										
1995 - 96 -										
October	0.4	-0.2	-1.7	-0.6	0.1	-0.4	-1.8	-0.8	-0.1	-0.4
November	0.2	-0.1	-1.1	-0.5	0.1	-0.3	-1.4	0.0	-0.1	-0.3
December	0.0	0.0	-0.7	0.0	-0.1	0.0	-0.7	0.4	-0.1	0.0
January	-0.2	-0.1	-0.2	0.7	-0.2	0.3	0.2	0.8	-0.1	0.3
February	-0.2	0.1	0.2	1.0	-0.2	0.5	0.2	0.8	-0.1	0.5
March	-0.3	0.1	1.4	1.2	-0.1	0.6	0.2	0.8	-0.1	0.6
April	-0.3	0.3	1.3	1.0	-0.1	0.6	-0.7	0.8	-0.1	0.6
May	-0.3	0.3	2.0	0.6	-0.1	0.5	-1.0	0.8	-0.1	0.5
June	-0.3	0.3	1.7	0.2	0.0	0.2	-1.2	1.1	-0.1	0.3
1996 - 97 -										
July	-0.3	0.1	1.7	0.1	-0.1	0.1	-0.5	1.9	-0.1	0.2
August	-0.4	0.1	1.7	-0.1	-0.1	0.0	0.0	1.5	-0.1	0.1
September	-0.3	-0.1	1.0	-0.2	-0.1	-0.1	0.7	1.8	0.0	0.0

LABOUR FORCE STATUS OF THE CIVILIAN POPULATION AGED 15 AND OVER
South Australia

Period	Civilian Population aged 15 and over Males (000)	Civilian Population aged 15 and over Females (000)	Unemploy- ment rate Ages 15-19 Persons (%)	Unemploy- ment rate All Ages Males (%)	Unemploy- ment rate All Ages Females (%)	Unemploy- ment rate All Ages Persons (%)	Partici- pation rate Males (%)	Partici- pation rate Females (%)	Partici- pation rate Persons (%)
	ANNUAL AVERAGE								
1985-86	526.9	545.6	20.6	8.2	8.8	8.4	75.6	46.8	60.5
1986-87	534.8	552.4	22.1	8.9	9.1	9.0	74.4	48.5	61.3
1987-88	542.4	560.0	20.8	8.8	9.1	8.9	73.5	48.9	61.0
1988-89	547.9	566.9	17.8	7.9	7.9	7.9	74.3	50.0	62.0
1989-90	552.4	573.4	16.2	6.9	7.2	7.1	74.6	50.6	62.4
1990-91	558.3	579.8	19.2	9.1	8.4	8.8	74.7	51.6	63.0
1991-92	563.9	585.4	25.0	12.1	9.9	11.2	72.9	50.7	61.6
1992-93	567.4	588.9	26.6	12.6	10.0	11.5	72.8	51.0	61.7
1993-94	570.6	592.0	28.3	11.5	9.8	10.8	71.7	51.2	61.3
1994-95	573.7	594.7	25.2	10.9	9.2	10.2	71.5	52.4	61.8
1995-96	576.2	597.1	26.8	10.3	8.3	9.5	71.7	52.4	61.9
PERCENTAGE CHANGE FROM PREVIOUS YEAR, ANNUAL AVERAGE									
1986-87	1.5	1.2
1987-88	1.4	1.4
1988-89	1.0	1.2
1989-90	0.8	1.1
1990-91	1.1	1.1
1991-92	1.0	1.0
1992-93	0.6	0.6
1993-94	0.6	0.6
1994-95	0.6	0.5
1995-96	0.4	0.5
MONTHLY, ORIGINAL									
1995 - 96 -									
July	575.0	595.9	23.8	10.1	8.0	9.2	71.3	52.6	61.8
August	575.1	596.1	27.2	10.5	7.7	9.3	71.7	52.4	61.9
September	575.3	596.2	27.5	10.7	8.3	9.7	72.7	52.1	62.2
October	575.5	596.5	30.8	10.5	8.1	9.5	71.7	51.3	61.3
November	575.7	596.7	25.3	9.8	7.6	8.9	71.7	51.8	61.6
December	575.9	596.9	25.6	9.7	8.2	9.1	72.6	52.7	62.5
January	576.2	597.2	30.5	10.9	9.6	10.4	72.1	51.4	61.6
February	576.5	597.5	30.5	11.2	9.5	10.5	72.3	52.3	62.1
March	576.7	597.7	26.6	10.2	8.6	9.5	71.5	52.6	61.9
April	577.0	598.0	24.6	10.2	8.5	9.5	71.7	53.0	62.2
May	577.3	598.2	27.3	10.1	8.4	9.4	70.7	53.2	61.8
June	577.6	598.5	22.4	9.3	7.5	8.5	70.6	53.0	61.7
1996 - 97 -									
July	578.0	598.9	24.1	9.3	8.1	8.8	70.7	53.2	61.8
August	578.4	599.2	23.8	10.2	8.4	9.4	70.4	52.9	61.5
September	578.8	599.6	n.y.a.	10.5	8.6	9.7	70.6	53.5	61.9
MONTHLY, TREND									
1995 - 96 -									
July	n.a.	n.a.	n.a.	10.9	8.5	9.8	72.0	52.6	62.2
August				10.7	8.3	9.7	72.1	52.4	62.1
September				10.6	8.3	9.6	72.2	52.2	62.0
October				10.4	8.2	9.5	72.1	51.9	61.8
November				10.2	8.2	9.4	72.0	51.8	61.7
December				10.2	8.3	9.4	71.9	51.8	61.7
January				10.2	8.3	9.4	71.8	51.9	61.7
February				10.3	8.4	9.4	71.6	52.2	61.7
March				10.3	8.4	9.4	71.5	52.5	61.8
April				10.2	8.4	9.4	71.4	52.8	61.9
May				10.1	8.4	9.4	71.2	53.0	62.0
June				10.0	8.5	9.4	71.1	53.2	62.0
1996 - 97 -									
July				10.0	8.6	9.4	71.0	53.3	62.0
August				10.0	8.7	9.4	70.8	53.3	61.9
September				10.1	8.8	9.5	70.8	53.3	61.9

AVERAGE WEEKLY EARNINGS OF EMPLOYEES
South Australia

Period	Full-time adults						All employees		
	Ordinary time earnings			Total earnings			Males	Females	Persons
	Males	Females	Persons	Males	Females	Persons			
ANNUAL AVERAGE (\$ per week)									
1984-85	381.90	319.30	364.80	407.40	325.80	385.10	367.20	238.70	316.20
1985-86	406.30	340.50	388.30	431.80	346.60	408.40	389.00	252.70	334.50
1986-87	431.80	363.70	412.20	455.90	370.20	431.20	411.80	268.90	352.20
1987-88	458.60	389.70	438.40	485.00	397.00	459.20	440.10	295.10	379.60
1988-89	481.50	424.30	465.70	517.60	435.10	494.90	473.40	315.10	408.50
1989-90	517.50	454.90	499.40	560.70	466.50	533.50	511.60	338.00	437.80
1990-91	561.30	486.10	537.90	598.90	498.10	566.90	546.70	358.10	462.00
1991-92	588.40	524.10	567.80	624.90	534.00	595.80	564.80	386.90	483.70
1992-93	610.10	534.90	585.40	646.40	548.80	613.70	560.00	382.60	477.40
1993-94	625.10	547.60	600.00	667.50	560.10	632.70	595.10	396.60	503.30
1994-95	632.70	559.10	608.20	681.70	572.50	645.30	599.90	411.90	513.40
1995-96	653.80	555.90	622.50	703.15	568.50	660.05	620.10	403.90	520.65
PERCENTAGE CHANGE FROM PREVIOUS YEAR									
1985-86	6.4	6.6	6.4	6.0	6.4	6.1	5.9	5.9	5.8
1986-87	6.3	6.8	6.2	5.6	6.8	5.6	5.9	6.4	5.3
1987-88	6.2	7.1	6.4	6.4	7.2	6.5	6.9	9.7	7.8
1988-89	5.0	8.9	6.2	6.7	9.6	7.8	7.6	6.8	7.6
1989-90	7.5	7.2	7.2	8.3	7.2	7.8	8.1	7.3	7.2
1990-91	8.5	6.9	7.7	6.8	6.3	6.3	6.9	5.9	5.5
1991-92	4.8	7.8	5.6	4.3	7.6	5.1	3.3	8.0	4.7
1992-93	3.7	2.1	3.1	3.4	2.4	3.0	-0.8	-1.1	-1.3
1993-94	2.5	2.4	2.5	3.3	2.4	3.1	6.3	3.7	5.4
1994-95	1.2	2.1	1.4	2.1	2.2	2.0	0.8	3.9	2.0
1995-96	3.3	-0.6	2.4	3.1	-0.7	2.3	3.4	-1.9	1.4
QUARTERLY (\$ per week)									
1993 - 94 -									
20 August	631.00	548.90	603.30	673.30	559.50	635.80	599.70	394.20	503.10
19 November	626.50	543.20	599.40	667.10	554.90	630.70	583.50	386.70	492.50
18 February	619.90	548.80	597.30	665.30	558.80	631.50	601.30	405.50	512.80
20 May	622.90	551.40	599.80	664.30	567.10	632.90	595.80	399.80	504.80
1994 - 95 -									
19 August	628.20	553.70	602.60	674.20	566.70	637.20	591.40	410.80	507.40
18 November	619.10	558.00	598.80	667.50	572.80	635.70	586.90	410.20	505.10
17 February	648.40	560.80	619.90	699.90	572.80	658.50	620.10	415.80	527.90
19 May	635.10	563.90	611.70	685.20	577.80	649.90	601.10	410.80	513.30
1995 - 96 -									
18 August	639.90	560.10	613.80	684.50	571.80	647.60	600.80	408.60	510.20
17 November	647.60	549.20	616.10	693.10	560.90	650.90	607.60	396.30	510.60
16 February	658.90	557.20	626.30	713.60	569.50	667.30	631.40	402.40	527.20
17 May	668.90	557.10	633.80	721.40	571.80	674.40	640.50	408.30	534.60
PERCENTAGE CHANGE FROM CORRESPONDING REFERENCE DATE IN PREVIOUS YEAR									
1994 - 95 -									
19 August	-0.4	1.2	-0.1	0.1	1.3	0.2	-1.4	4.2	0.9
18 November	-1.2	2.7	-0.1	0.1	3.2	0.8	0.6	6.1	2.6
17 February	4.6	2.2	3.8	5.2	2.5	4.3	3.1	2.5	2.9
19 May	2.0	2.3	2.0	3.1	1.9	2.7	0.9	2.8	1.7
1995 - 96 -									
18 August	1.9	1.2	1.9	1.5	0.9	1.6	1.6	-0.5	0.6
17 November	4.6	-1.6	2.9	3.8	-2.1	2.4	3.5	-3.4	1.1
16 February	1.6	-0.6	1.0	2.0	-0.6	1.3	1.8	-3.2	-0.1
17 May	5.3	-1.2	3.6	5.3	-1.0	3.8	6.6	-0.6	4.1
PERCENTAGE CHANGE FROM PREVIOUS REFERENCE DATE									
1993 - 94 -									
19 November	-0.7	-0.7	-0.6	-0.9	-0.8	-0.8	-2.7	-1.9	-2.1
18 February	-1.1	1.0	-0.4	-0.3	0.7	0.1	3.1	4.9	4.1
20 May	0.5	0.5	0.4	-0.2	1.5	0.2	-0.9	-1.4	-1.6
1994 - 95 -									
19 August	0.9	0.4	0.5	1.5	-0.1	0.7	-0.7	2.8	0.5
18 November	-1.4	0.8	-0.7	-1.0	1.1	-0.2	-0.8	-0.1	-0.5
17 February	4.7	0.5	3.6	4.9	0.0	3.6	5.7	1.4	4.5
19 May	-2.1	0.6	-1.3	-2.1	0.9	-1.3	-3.1	-1.2	-2.8
1995 - 96 -									
18 August	0.8	-0.7	0.3	-0.1	-1.0	-0.4	0.0	-0.5	-0.6
17 November	1.2	-1.9	0.4	1.3	-1.9	0.5	1.1	-3.0	0.1
16 February	1.7	1.5	1.7	3.0	1.5	2.5	3.9	1.5	3.3
17 May	1.5	0.0	1.2	1.1	0.4	1.1	1.4	1.5	1.4

FINANCE COMMITMENTS
South Australia

<i>Secured housing finance commitments to individuals</i>						
<i>Construction and purchase of dwellings</i>						
<i>Period</i>	<i>Number of dwelling units</i>	<i>Amount (\$ million)</i>	<i>Alterations and additions (\$ million)</i>	<i>Personal finance commitments (\$ million)</i>	<i>Commercial finance commitments (\$ million)</i>	<i>Lease finance commitments (\$ million)</i>
ANNUAL						
1985-86	21,714	920.1	48.9	1,203.9	3,492.7	339.8
1986-87	21,658	965.5	47.1	1,222.4	4,242.8	334.5
1987-88	26,582	1,266.6	47.0	1,448.9	6,486.6	392.1
1988-89	29,977	1,574.2	51.4	1,534.1	7,285.5	512.4
1989-90	25,650	1,438.2	45.8	1,525.7	6,926.4	445.4
1990-91	28,694	1,731.3	58.8	1,503.6	6,257.0	323.2
1991-92	31,765	2,083.8	88.8	1,456.7	6,667.9	256.2
1992-93	36,960	2,569.5	102.8	1,656.9	5,122.5	249.5
1993-94	45,725	3,387.9	221.8	1,840.3	5,467.2	250.6
1994-95	36,429	2,879.7	242.2	2,152.2	5,405.6	271.4
1995-96	38,707	2,982.2	240.7	2,211.5	6,516.2	265.4
PERCENTAGE CHANGE FROM PREVIOUS YEAR						
1986-87	-0.3	4.9	-3.7	1.5	21.5	-1.6
1987-88	22.7	31.2	-0.2	18.5	52.9	17.2
1988-89	12.8	24.3	9.4	5.9	12.3	30.7
1989-90	-14.4	-8.6	-10.9	-0.5	-4.9	-13.1
1990-91	11.9	20.4	28.4	-1.4	-9.7	-27.4
1991-92	10.7	20.4	51.0	-3.1	6.6	-20.7
1992-93	16.4	23.3	15.8	13.7	-23.2	-2.6
1993-94	23.7	31.9	115.7	11.1	6.7	0.5
1994-95	-20.3	-15.0	9.2	16.9	-1.1	8.3
1995-96	6.3	3.6	-0.6	2.8	20.5	-2.2
MONTHLY						
1994 - 95 - June	3,290	268.2	21.7	233.5	517.5	31.7
1995 - 96 - July	3,013	243.5	19.3	192.7	490.6	27.4
August	3,307	256.3	17.9	209.5	461.8	20.0
September	3,161	241.5	18.2	182.4	384.2	18.2
October	3,257	246.9	19.6	179.3	412.6	18.8
November	3,593	271.3	23.3	186.1	488.3	21.0
December	2,981	231.2	17.8	171.1	720.2	25.7
January	2,965	226.9	17.4	175.6	562.2	13.0
February	3,482	264.6	20.6	179.2	447.5	23.4
March	3,694	284.8	23.2	186.1	542.7	25.4
April	3,271	249.5	18.3	175.1	604.8	16.3
May	3,276	252.0	18.9	192.4	773.7	24.8
June	2,707	213.6	26.1	182.0	627.7	31.3
1996 - 97 - July	3,013	237.8	21.7	190.8	656.7	22.8
August	2,790	217.5	18.9	182.8	444.6	18.9
PERCENTAGE CHANGE FROM PREVIOUS MONTH						
1995 - 96 - July	-8.4	-9.2	-11.1	-17.5	-5.2	-13.6
August	9.8	5.3	-7.0	8.7	-5.9	-26.9
September	-4.4	-5.8	1.4	-5.3	-16.8	-9.1
October	3.0	2.3	7.6	-14.4	7.4	3.3
November	10.3	9.9	18.9	2.0	18.4	11.7
December	-17.0	-14.8	-23.5	-4.6	47.5	22.3
January	-0.5	-1.9	-2.2	-5.6	-21.9	-49.4
February	17.4	16.6	18.1	4.7	-20.4	79.9
March	6.1	7.6	12.8	5.9	21.3	8.4
April	-11.5	-12.4	-20.9	-2.3	11.4	-35.8
May	0.2	1.0	3.2	3.4	27.9	52.1
June	-17.4	-15.2	37.9	3.9	-18.9	26.2
1996 - 97 - July	11.3	11.3	-16.8	4.8	4.6	-27.1
August	-7.4	-8.5	-13.0	-4.2	-32.3	-17.2

PUBLICATIONS SOURCE INDEX

- 1 *Australian National Accounts: State Accounts* (5242.0) Quarterly
- 2 *International Merchandise Trade, Australia* (5422.0) Quarterly
- 3 *Retail Trade, Australia* (8501.0) Monthly
- 4 *New Motor Vehicles Registrations, Australia, Preliminary* (9301.0) Monthly
- 5 *Tourist Accommodation, Australia* (8635.0) Quarterly
- 6 *State Estimates of Private New Capital Expenditure* (5646.0) Quarterly
- 7 *Building Approvals, Australia* (8731.0) Monthly
- 8 *Building and Construction Activity, Australia* (8754.0) Quarterly
- 8a *Building Activity, Australia, Dwelling Unit Commencements, Preliminary* (8750.0) Quarterly
- 9 *Engineering Construction Activity, Australia* (8762.0.40.001) Quarterly
- 10 *Manufacturing Production, Australia, Preliminary* (8301.0) Monthly
- 11 *Livestock Products, Australia* (7215.0) Monthly
- 12 *Actual and Expected Private Mineral Exploration, Australia* (8412.0) Quarterly
- 13 *Consumer Price Index* (6401.0) Quarterly
- 14 *Price Index of Materials Used in House Building, Six State Capital Cities and Canberra* (6408.0) Monthly
- 15 *Price Index of Materials Used in Building Other Than House Building, Six State Capital Cities and Canberra* (6407.0) Monthly
- 16 *House Price Indexes: Eight Capital Cities* (6416.0) Quarterly
- 17 *Australian Demographic Statistics* (3101.0) Quarterly
- 18 *The Labour Force, Australia, Preliminary* (6202.0) Monthly
- 19 *Job Vacancies and Overtime, Australia* (6354.0) Quarterly
- 20 *Industrial Disputes, Australia* (6321.0) Monthly
- 21 Unpublished overseas arrival and departure statistics on microfiche
- 22 *Average Weekly Earnings, States and Australia* (6302.0) Quarterly
- 23 *Award Rates of Pay Indexes, Australia* (6312.0) Monthly
- 24 *Housing Finance for Owner Occupation, Australia* (5609.0) Monthly
- 25 Unpublished statistics available from PC AUSSTATS
- 26 *Reserve Bank of Australia Bulletin*

ABS PUBLICATIONS AND PRODUCTS

Statistics collected by the ABS are generally made available in published form. Some, including those not published, are available in one or more of the following forms: microfiche, magnetic tape, computer printout, CD, floppy disk, photocopy and clerically extracted tabulation.

Current publications produced by the ABS are listed in the *Catalogue of Publications and Products, Australia* (1101.0). The ABS also issues on Tuesdays and Fridays a *Release Advice* (1105.0) which lists publications to be released within the next few days. The Catalogue and Release Advice are available from any ABS Office.

To receive ABS publications on a regular basis contact the ABS *Publication Mailing Service* on 1800 02 0608.

A large range of data is available via on-line services, diskette, magnetic tape, tape cartridge and CD ROM. For more details about our electronic data services, contact any ABS Office.

The ABS *Information Consultancy Service* has specialist staff to assist and advise clients

with their statistical inquiries. For more detailed information about these services call at the ABS, 55 Currie Street, Adelaide, telephone the Information Officer on (08) 8237 7100, or write to Information Service, ABS, GPO Box 2272, Adelaide SA 5001.

The ABS also provides a *Statistical Consultancy Service*, for expert assistance in survey, sample and questionnaire design, data collection, processing and analysis, and statistical modelling. For more information contact Gary Niedorfer, on (08) 8237 7379.

SYMBOLS AND OTHER USAGES

n.a. not available
 n.y.a. not yet available
 .. not applicable
 0, 0.0 nil or rounded to zero

Where figures have been rounded, discrepancies may occur between sums of the component items and totals.



Produced by the Australian Government Publishing Service
© Commonwealth of Australia 1996

Recommended retail price: \$15.50



2130740011962
ISSN 1039-8880